

Academic Preparation for Student Success

2022 High School Counselor Conferences



Lourdes Kulju, Chancellor's Office, lkulju@calstate.edu

Christina Moreno-Donato, Chancellor's Office cmorenodenato@calstate.edu

Agenda

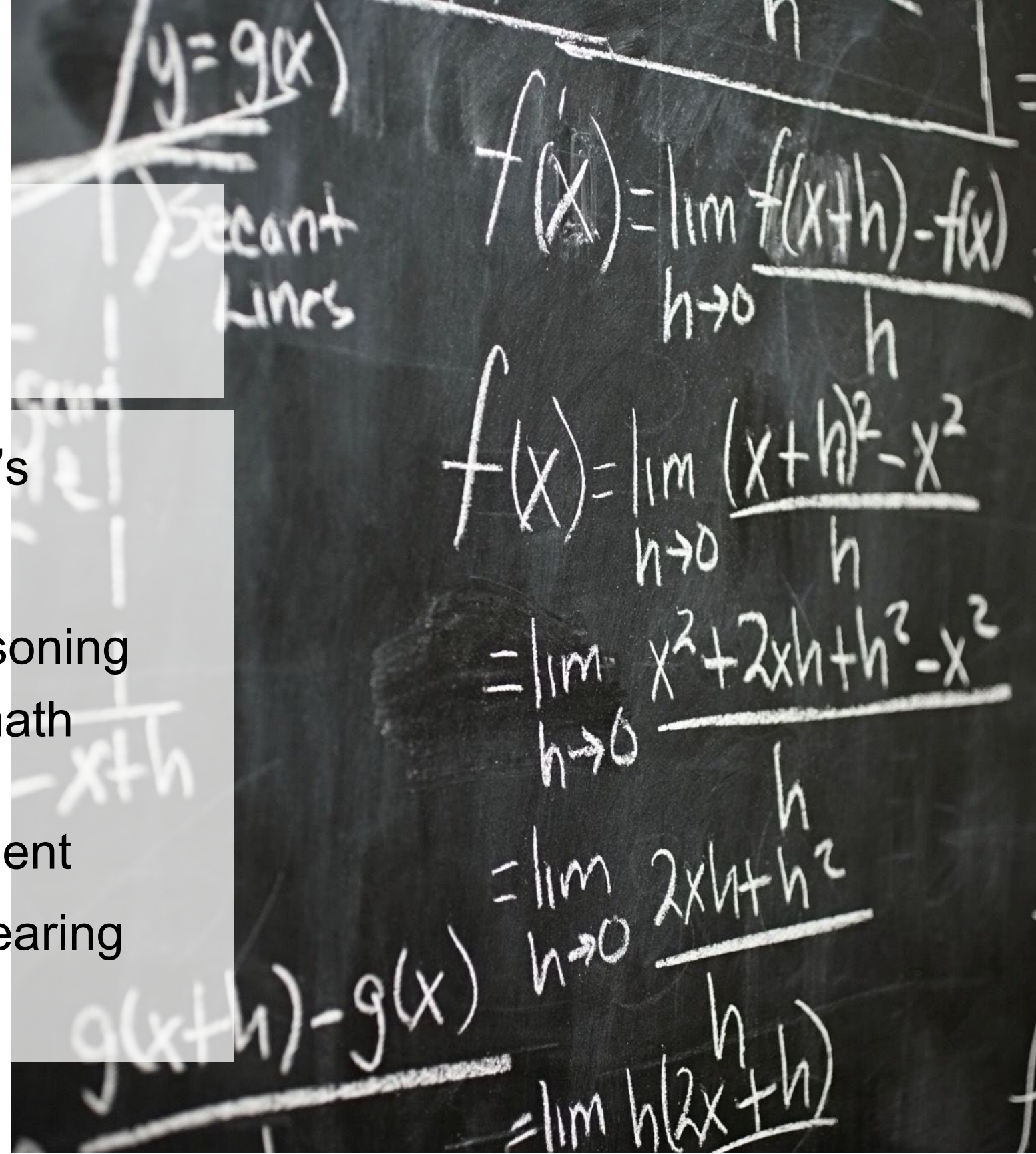
- Academic Preparation Policy Overview/Updates
- English and Math Updates
- Resources
- Meet your EAP Coordinators



CSU Academic Preparation Policy

Assess students' preparedness for the CSU's General Education(GE) requirements in Written Communication and Math/Quantitative Reasoning

- Early Signal of students' English and math skills (CAASPP exam)
- More accurate assessment and placement
- Improved Early Start Program (credit bearing course)



Benefits of CSU's Academic Preparation Policy

All students begin in credit-earning General Education (GE) English and math/QR courses

Expands math pathways

*STEM based vs. Non-Stem based majors

Provides students the needed support to be successful at the CSU

CSU Academic Preparation Policy

Multiple Measures For Placement Include:

*Standardized Tests **CAASPP/EAP, AP, IB, CLEP, and ACT*, SAT***

High School Grade Point Average (GPA)

High School Math GPA

High School and College Coursework

***NOTE:** ACT and SAT test scores are no longer used for admission but considered for English/math placement. Students may submit scores, if available.

First-Year Placement: English

Fulfilled* Requirement
Category I

Advanced Placement (AP) Test Score:

- 3 or above: AP Language and Composition
- 3 or above: AP Composition and Literature

College Transfer Coursework:

- Completed college course (C- or better) that satisfies CSU GE Area A2 (written communication)

Student placed in Cat I if one criteria in this category is met

If NO, go to Cat II →

Enroll in GE English Course
Category II

CAASPP/EAP English Test Score:

- Standard Exceeded
- Standard Met and completed 12th grade approved year-long English course (C- or better)*

High School Courses and GPA:

- Weighted GPA 3.3 or above
- GPA 3.0 or above and completed 12th grade approved year-long English course (C- or better)*
- GPA 3.0 or above and completed Honors English course
- GPA 3.0 or above and 5 or more years of high school English

Optional If Scores Available:

SAT English Test Score:

- 550 or above
- 510 – 540 and completed 12th grade approved year-long English course (C- or better)*

ACT English Test Score:

- 22 or above
- 19 – 21 and completed 12th grade approved year-long English course (C- or better)*

Student placed in Cat II if one criteria in this category is met

If NO, go to Cat III →

Enroll in Supported GE English Course
Category III

High School Courses and GPA:

- Weighted GPA 3.0 or above and 4 or more years of English

Optional If Scores Available:

SAT English Test Score:

- 510 – 540 and 4 or more years of high school English

ACT Test Score:

- 19 - 21 and 4 or more years of high school English

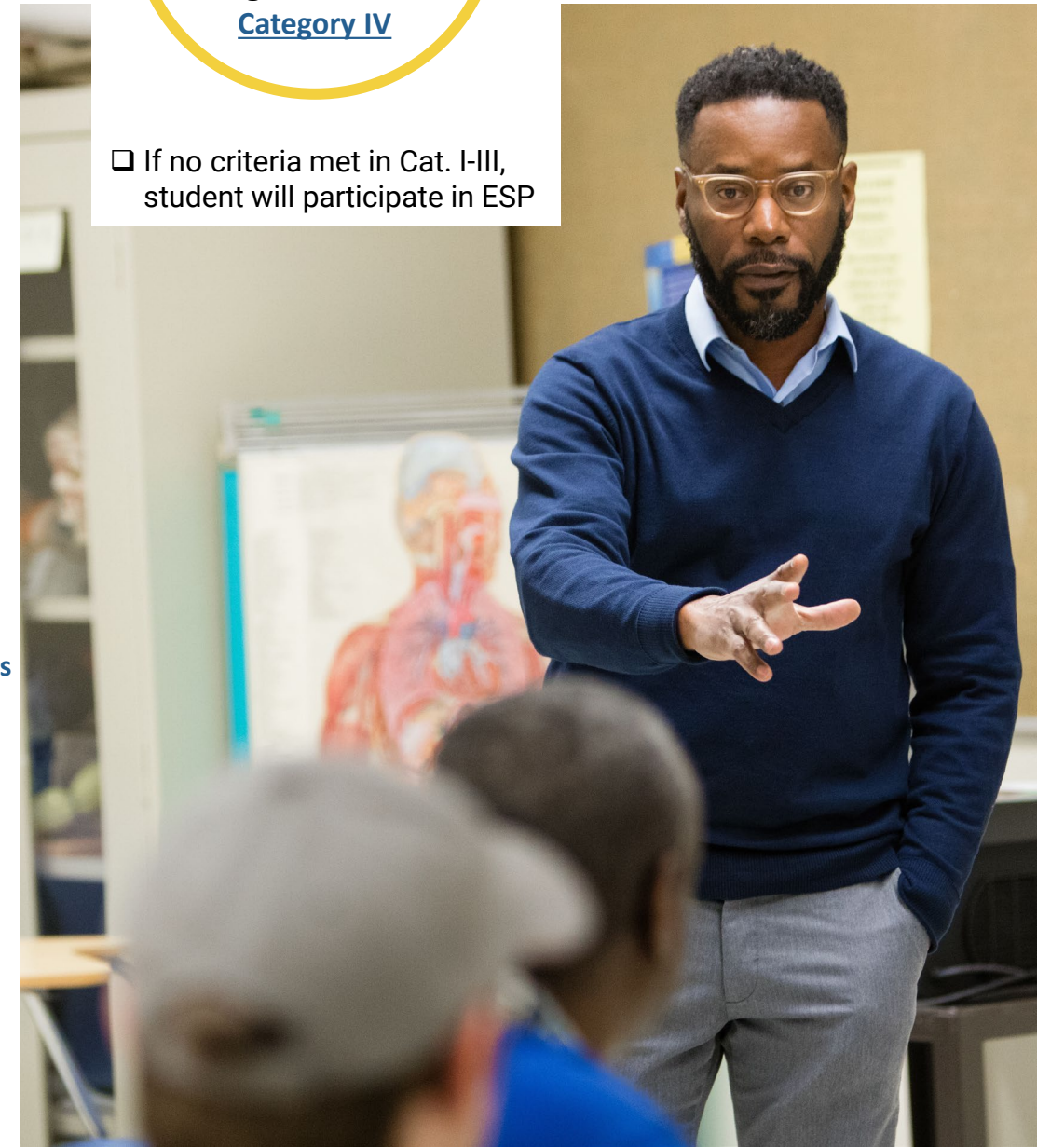
Student placed in Cat III if one criteria in this category is met

If NO, go to Cat IV →

ESP Required

Enroll in Supported GE English Course
Category IV

- If no criteria met in Cat. I-III, student will participate in ESP



First-Year Placement: (Pre-STEM, STEM, Other Math Intensive Majors)

Fulfilled Requirement
Category I

Advanced Placement (AP) Test Score:

- 3 or above: Calculus AB
- 3 or above: Calculus BC
- 3 or above: AP Statistics
- 3 or above: AP Computer Science Principles

International Baccalaureate (IB) Test Score:

- 4 or above on Math Higher Level (HL)

College Level Examination Program (CLEP) Score:

- 50 or above on: Calculus, College Algebra, College Algebra-Trigonometry, Pre-Calculus, or Trigonometry

College Transfer Coursework:

- Completed college course (C- or better) that satisfies CSU GE Area B4 (math/QR)

Student placed in Cat I if one criteria in this category is met

If NO, go to Cat II →

Enroll in GE Math Course
Category II

CAASPP/EAP Math Test Score:

- Standard Exceeded
- Standard Met and completed 12th grade approved year-long Math course beyond Algebra 2 (C- or better)*

High School Courses and GPA:

- Weighted Math GPA 3.5 and completed 12th grade approved year-long math course beyond Algebra 2 (C- or better)*
- Weighted Math GPA 3.5 or above and 5 or more years of Math or QR
- Weighted GPA 3.7 or above

Optional If Scores Available:

SAT Math Test Score:

- 570 or above
- 550 or above on Subject Test in Math Level 1 or 2
- 520 – 560 and completed 12th grade approved year-long Math course beyond Algebra 2 (C- or better)*

ACT Math Test Score:

- 23 or above
- 20– 22 and completed 12th grade approved year-long Math course beyond Algebra 2 (C- or better)*

Student placed in Cat II if one criteria in this category is met

If NO, go to Cat III →

Enroll in Supported GE Math Course
Category III

High School GPA:

- Weighted Math GPA 3.3 or above

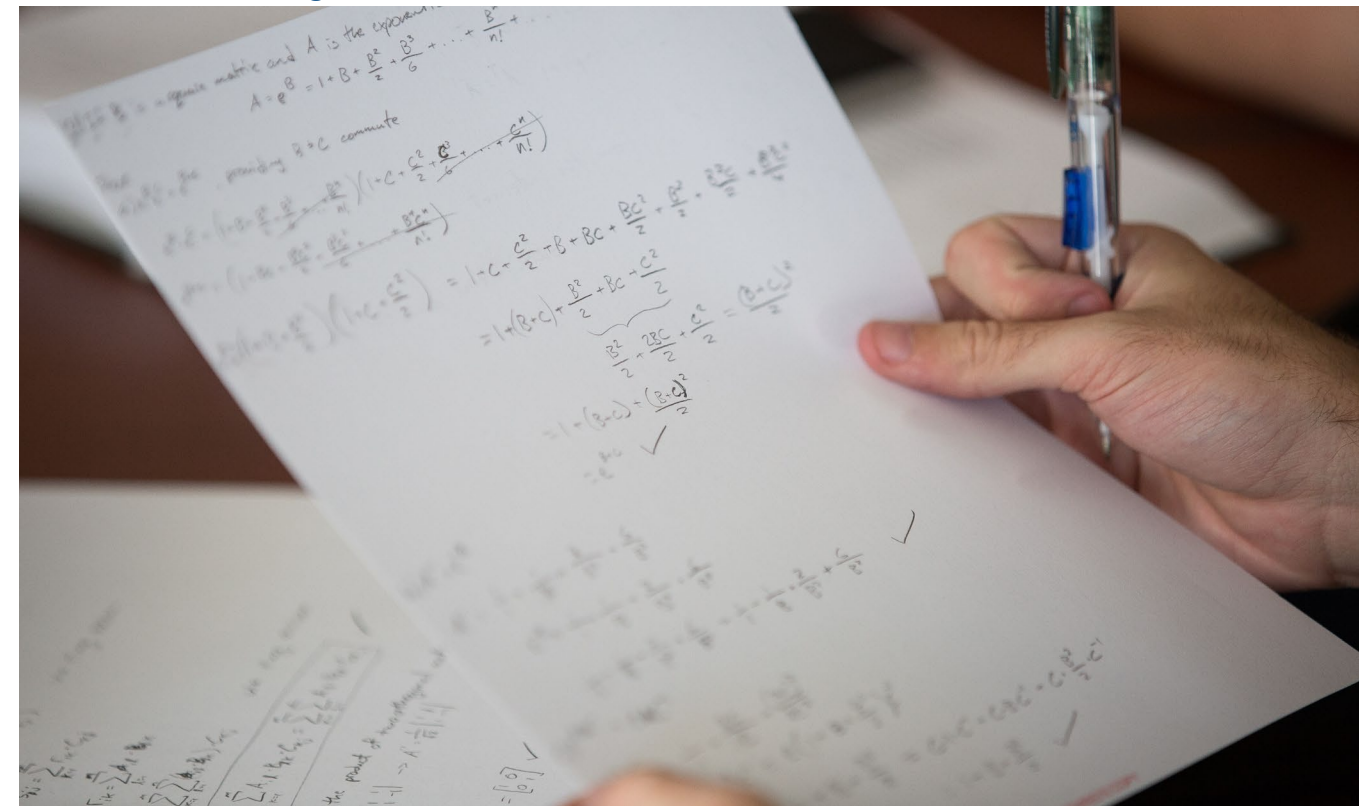
Student placed in Cat III if one criteria in this category is met.

If NO, go to Cat IV →

ESP Required

Enroll in Supported GE Math Course
Category IV

- If no criteria met in Cat I-III, student will participate in ESP



First-Year Placement: Math (Non-STEM)



Fulfilled Requirement
Category I

Advanced Placement (AP) Test Score:

- 3 or above: Calculus AB
- 3 or above: Calculus BC
- 3 or above: AP Statistics
- 3 or above: AP Computer Science Principles

International Baccalaureate (IB) Test Score:

- 4 or above on Math Higher Level (HL)

College Level Examination Program (CLEP) Score:

- 50 or above on: Calculus, College Algebra, College Algebra-Trigonometry, Pre-Calculus, or Trigonometry

College Transfer Coursework:

- Completed college course (C- or better) that satisfies CSU GE Area B4 (math/QR)

Student placed in Cat I if one criteria in this category is met



Enroll in GE Math Course
Category II

CAASPP/EAP Math Test Score:

- Standard Exceeded
- Standard Met and completed 12th grade approved year-long Math course beyond Algebra 2 (C- or better)*
- Standard Met and 4 or more years of high school Math or QR

High School Courses and GPA:

- Weighted Math GPA 3.0 or above and completed 12th grade approved year-long math course beyond Algebra 2 (C- or better)*
- Weighted Math GPA 3.0 or above and 5 or more years of Math or QR
- Weighted GPA 3.7 or above
- Weighted GPA 3.5 or above and 4 or more years of Math or QR

Optional If Scores Available:

SAT Math Test Score:

- 570 or above
- 550 or above on Subject Test in Math Level 1 or 2
- 520 – 560 and completed 12th grade approved year-long Math course beyond Algebra 2 (C- or better)*

ACT Math Test Score:

- 23 or above
- 20– 22 and completed 12th grade approved year-long Math course beyond Algebra 2 (C- or better)*

Student placed in Cat II if one criteria in this category is met



Enroll in Supported GE Math Course
Category III

High School GPA:

- Weighted Math GPA 3.3 or above
- Weighted GPA 3.0 or above

Student placed in Cat III if one criteria in this category is met, If NO, go to Cat IV →



ESP Required
Enroll in Supported GE Math Course
Category IV

- If no criteria met in Cat I-III, student will participate in ESP



Academic Preparation:GPA Calculation

- Math GPA Calculation Includes:
 - Area C and G courses
 - Courses from 9th, 10th, and 11th grades reported on Cal State Apply
 - Algebra 1/Geometry courses taken in middle school
- High School GPA Calculation Includes:
 - “a-g” coursework in 10th and 11th grades

Campuses may use additional student data or voluntary supplemental assessment activities to place students in appropriate courses.



Academic Preparation Recap

Placement in 1st year English/math based on multiple measures

Based on self-reported completed coursework via CalState Apply

SAT/ACT scores may still be submitted for placement consideration if available
(Students without ACT/SAT scores will not be disadvantaged in placement decisions)

Student placed in category 4 will participate in Early Start/summer program

Student strongly encouraged to take a rigorous senior year-long English/math QR courses (ERWC, MRWC, weighted honors, IB, AP, other advanced courses)

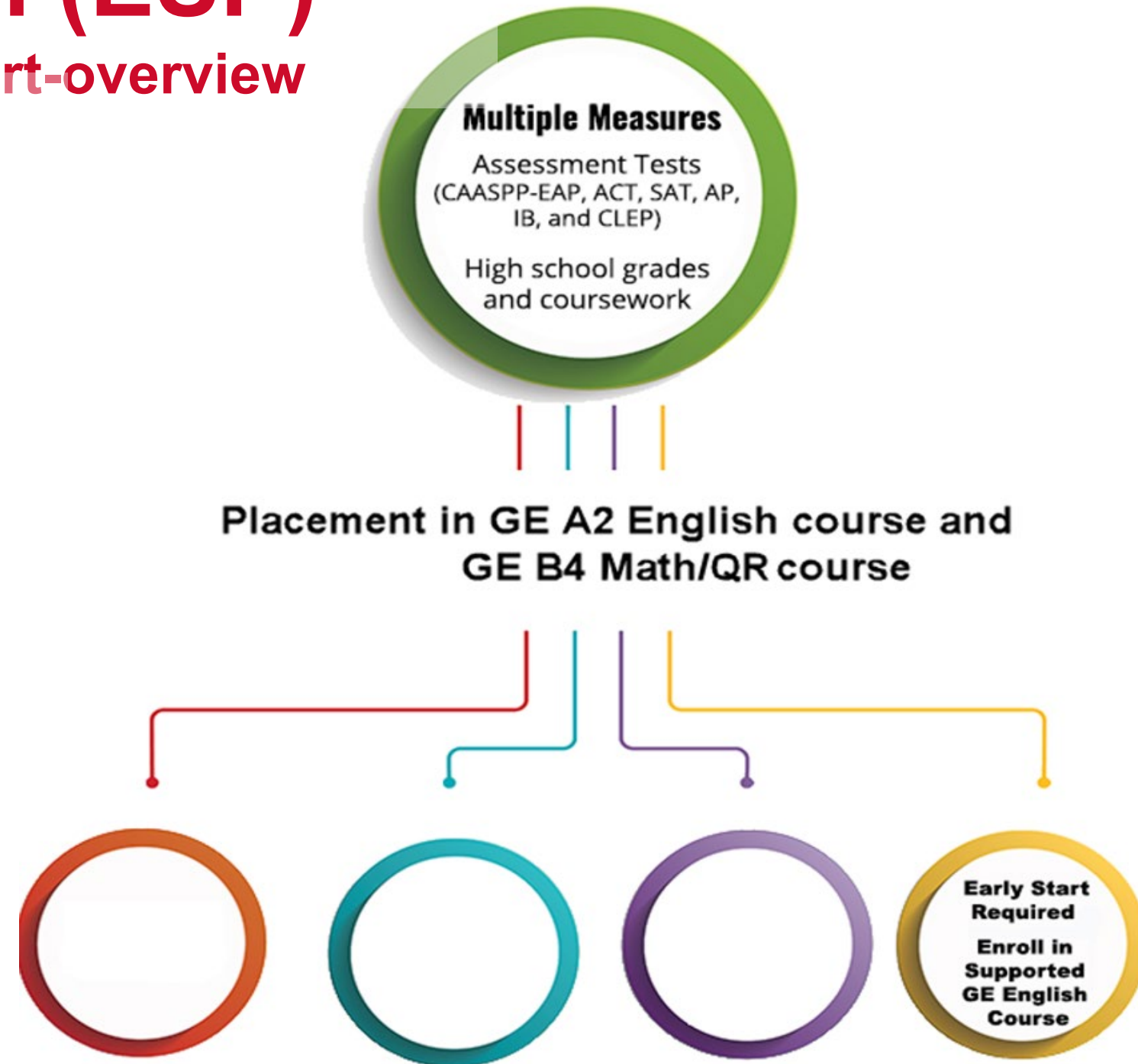
The Early Start Program (ESP)

<https://csustudentsuccess.org/early-start-overview>

- Designed to better prepare students for college, with a focus on improving English/written communication and mathematics/quantitative reasoning
- Supports student success and baccalaureate degree completion

Who Participates in ESP?

- First-year freshman needing additional support as determined by systemwide placement standards.
- Takes place in the Summer before enrollment in first Fall semester.



Re-envisioning Early Start/Summer Programs

ESP will be reframed in an effort to enhance summer programs that support first-year student success.

Goals for summer programming:

- Establish intentional pathways and support to ensure students complete their math and English requirements within the first year.
- Nurture a strong sense of belonging for students who participate in these programs.



Supported Course Models

Support courses are connected to credit bearing college-level English/math courses such as:

Labs, tutoring, mentorship, workshops, and stretch courses (courses extended over terms)



Transitioning to the CSU

Student Services | CSU (calstate.edu)

Student Support Services:

- New Student Orientation
- Academic Advising
- Tutoring and Mentoring
- Career Services
- EOP & Foster Youth
- Basic Needs
- Student Health
- Mental Health
- Student Activities



Expository Reading and Writing Course (ERWC)

A rigorous standards-based course created by the CSU and designed to help educators prepare high school students for college:

- Year-long course for 11th and 12th grade
- Approved by the CSU and UC system to fulfill A-G requirements (not a remedial course)
- Helps students meet writing standards for college



Professional Development, Network and Online Community

ERWC adopted by over 1,000 high schools in California.

Over 15,000 educators have participated in ERWC Professional Learning training

ERWC teaching certification is required.

Training consists of a **Free** 4-day introductory workshop session, offered across regions in both in-person and online formats

To learn more about the ERWC, how to adopt the course, fee workshops and resources visit: <https://writing.csusuccess.org/>

CSU Mathematics Courses

The following CSU campuses developed senior year course as alternative options to the traditional courses (trig, math analysis, pre-calculus, calculus, etc.):

- **San Diego:** (Discrete Mathematics Pre-Collegiate, Discrete Mathematics Problem Solving)
- **Sacramento, Fresno:** (Transition to Quantitative Reasoning, Quantitative Reasoning with Advanced Mathematical Topics-TQR and QRAT)

CSU Mathematics Courses

- **Pomona, Long Beach, San Bernardino, Fresno, San Jose:** Mathematical Reasoning with Connections-MRWC
- **Monterey Bay:** Transition to College Level Mathematics
- **Los Angeles:** CourseKata Statistics and Data Science
- **Northridge:** Transition to College Mathematics and Statistics

For information on these courses contact: [CSU EAP Coordinator Directory](#)

CSU Mathematics Course Data as of Summer 2021

94 School Districts

270 High Schools

677 Mathematics Teachers

67,146 Students

CSU's Areas of Focus in Mathematics

With equity-based thinking, the CSU is exploring multiple strategies that prepare students with the needed critical skills (QR, scientific, data literacy) necessary for student success

Professional learning on PK-12 data science

Numeracy/quantitative literacy in early learning

Onboarding algebra

Mathematics literacy for elementary school teachers

Moving away from stem programs that only include traditional math and science to also include data science and computer science to align with growing careers in the industry



CSU Student Success

Committed to Student Success from High School Preparation to College Graduation

At the CSU, we work every day to help ensure one thing for our more than 481,200 students: the timely completion of a rigorous, quality degree in preparation for a lifetime of achievement.

To accomplish this, the CSU has transformed academic preparation in an effort to provide all first-time freshman the opportunity and support needed to be successful in college-level coursework. This website provides guidance on assessment of English and math skills, placement in General Education (GE) English and math/quantitative reasoning courses and the Early Start Program.

Student and Counselor Resources

csustudentsuccess.org

- Academic Preparation Poster and Flyer (PDF)
- Academic Preparation Brochure
- Academic Preparation Policy FAQ's
- CSU Placement Estimator
- CSU's High School Success Dashboard
Interactive website sharing California high school specific data on the college preparation and progress of students enrolled in CSU campuses.
- CAASPP Practice Test
Students can prepare for the Smarter Balanced English Language Arts and Mathematics assessment tests taken in the spring of their Junior year.
- California Colleges Website
Information on higher education opportunities in California including virtual campus tours, counseling, and admissions planners.
- Dual Enrollment
Information on how students can begin taking college-coursework while still in High School.
- MultipleMeasures
How Multiple Measures is used to determine placement in 1st-Year GE English and Math/QR courses
- UC High School Articulation
- Other Resources



Prepare for College

How many students completed the CSU math and English proficiency requirements before entry?



Enroll at a CSU

How many enrolled at a CSU campus?

**QUICK
FACT**



Choose a Major

How many students declared a major upon arrival at the CSU?

ACTIONS



Get Off to a Fast Start

How many completed a full course load (30+ units) in their first year?

**MORE
DATA**



Earn a CSU Degree

How many graduated?

CSU Placement Estimator

<http://csustudentsuccess.org/estimator>



Try the English and Math Placement Estimator

By assessing the needs of each individual student, this tool will help estimate student placement in first-year English and math courses creating a pathway towards successful learning.

ESTIMATE YOUR PLACEMENT

- Incorporates all multiple measures to evaluate placement in GE English and Math/QR courses
- Early signal for placement in English and Math/QR
- Identify best course placement for first-time freshmen