



Community College Counselors Conference September 2024



Welcome

- Why Choose the CSU
- Admission Updates
- Transfer Success Pathway Program
- CSU Transfer Planner
- CSU Tuition & Financial Aid
- Counselor Resources

Investing in the Future Together

We are the CSU:

- 87% transfer acceptance rate
- 89.7% CCC transfer acceptance rate
- More than 57% first in their family to earn a bachelor's degree
- 95% of undergraduates are from California

Securing Opportunities:

- 81% of students receive financial aid
- 60% of undergraduates cover tuition through non-loan aid
- More than 50% of undergraduates leave with no loan debt

The CSU Strives:

- Money Magazine's "Best Public Colleges in America"
- Washington Monthly's "Best Bang for the Buck"
- CollegeNET's "Social Mobility Index"





Graduation Initiative 2025:

Reimagining Student Success

- Finishing strong: Graduation Initiative 2025
- Closing equity gaps
- Welcoming America's new majority
- Planning ahead to the future
- Leading the nation in advancing student success and equity





Advancing Equity, Innovation, and Student Empowerment

Centering Equity:

California State Assembly honored Sacramento State with state's first Black-serving institution designation.

Learn by Doing:

- Wide range of research centers and institutes
- Areas include:
 - Agriculture
 - Desert
 - STEM
 - Biotechnology
 - Water Management and more

Fostering Connections:

- Student government, clubs and sports
- Identity and culturally based centers
- Student well-being focus

Enhancing the Student Experience: Support Services

The Chancellor's Office and the 23 campuses of the California State University offer a wide variety of resources to meet the diverse needs of the system's more than 450,000 students.

- Athletics
- Basic Needs Initiative
- Career Services
- Foster Youth
- Identity Centers
- Transfer Centers
- Support for Students with Children
- Mental Health Services
- Resources for Undocumented Students
- Services to Students with Disabilities
- Student Government (CSSA)
- Student Health Services
- Veterans Services
- Educational Opportunity Program (EOP)
- Honors and Special Academic Programs
- Library Services
- CSU Fully Online Courses
- Study Abroad





Admission Updates

Great Admission Redesign

Project Components:

- Auto Admission Communications through Cal State Apply (2025 for transfer students)
- Version of direct admissions
- Admission Communications through CaliforniaColleges.edu
 - Grades 9 – 12
 - Electronic final transcripts using CCGI

Cal State Apply Communications:

- Campuses will be able to configure at the program level
- Communications will be based on selection criteria
- CA residents, GPA, course completion, etc.
- Once a student has entered enough data to determine eligibility applicant will receive communication
- Applicant will still need to fulfill all requirements
- Campuses will still need to collect transcripts, clear admission, etc.

Final Transcripts:

- Work with districts to upload final data through CCGI
- Work to automate admission clearance



Lumina[™]
FOUNDATION

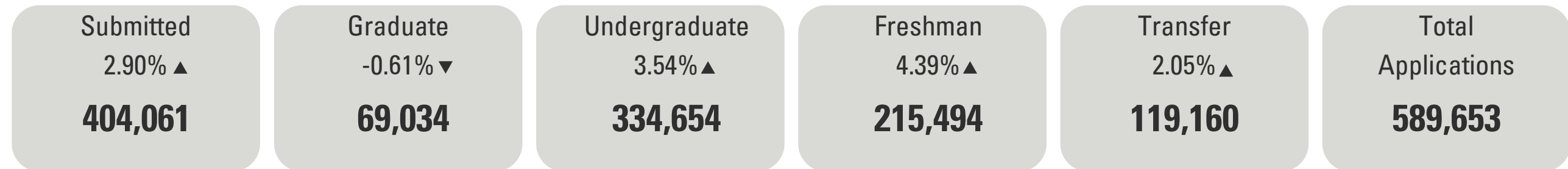


Fall 2024 Applications

Applications



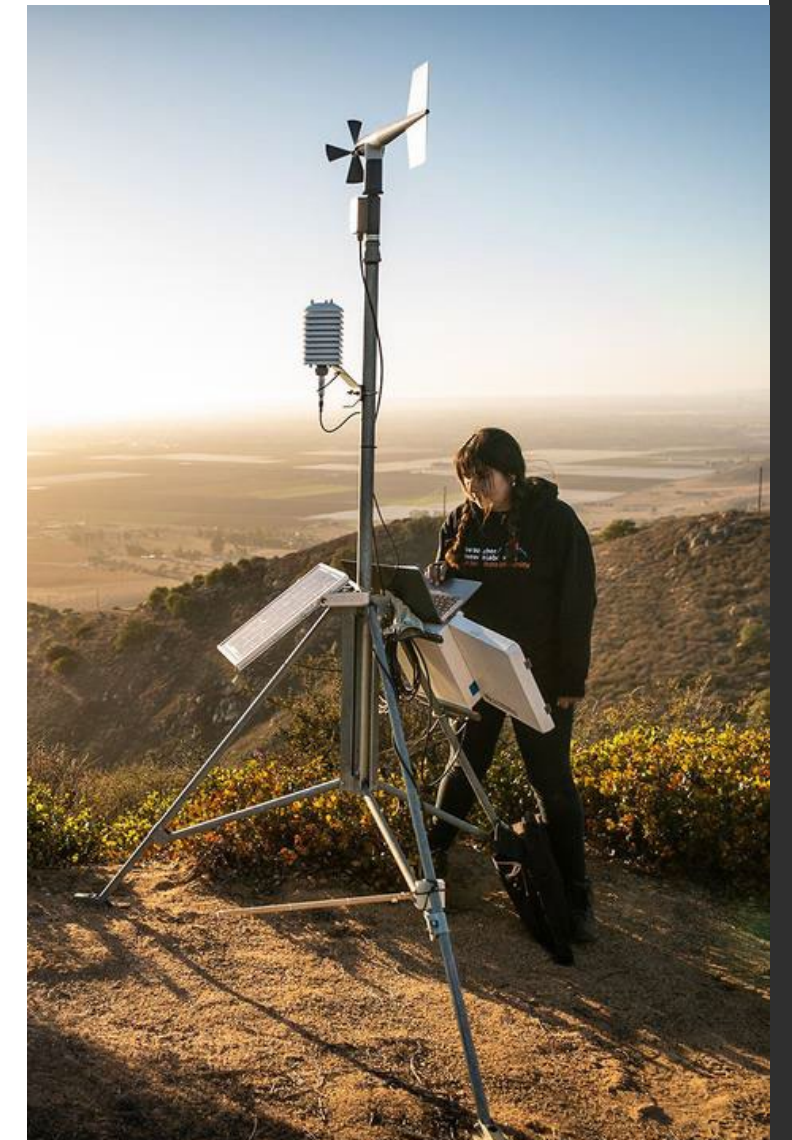
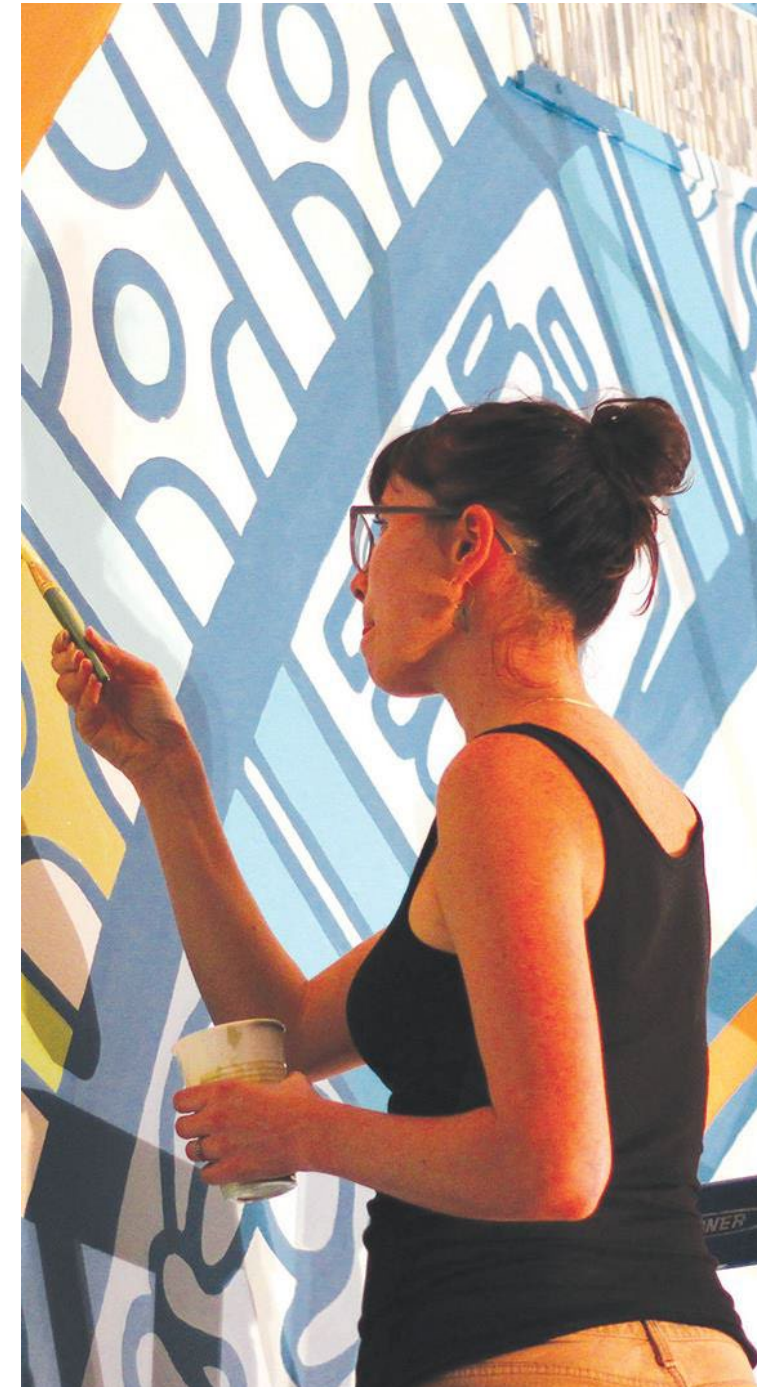
Applicants



Increasing Access: Impaction Update

“Campus impaction” or “level impaction” means that a university has reached its enrollment capacity for instructional resources and physical support and cannot accommodate all the eligible undergraduate applications it receives.

- 18 universities have no impaction or only have program impaction
- All undergraduate programs, pre-programs, and undeclared/undecided programs are impacted for the following universities:
 - Cal Poly San Luis Obispo
 - Cal State Fullerton
 - Cal State Long Beach
 - San Diego State
 - San José State



Assembly Bill 928

- Single GE pattern for CSU and UC transfer admissions
- Starting **Fall 2025**, IGETC and CSU Breadth will be replaced with Cal-GETC
- Community College students will be placed on an Associate Degree for Transfer (ADT) path, if available



CSU GE Breadth

Fall 2021 to Summer 2025

LOWER-DIVISION (39-40 units)

Area A Communication in the English Language and Critical Thinking

- A1 Oral Communication (3 units)
- A2 Written Communication (3 units)
- A3 Critical Thinking (3 units)

Area B Scientific Inquiry and Quantitative Reasoning

- B1 Physical Science (3 units)
- B2 Life Science (3 units)
- B3 Laboratory Activity (0 - 1 unit)
- B4 Mathematics/Quantitative Reasoning (3 units)

Area C Arts and Humanities

- C1 Arts (3 units)
- C2 Humanities (3 units)
- Additional C1 or C2 (3 units)

Area D Social Sciences ^

- Two courses (6 units)

Area E Lifelong Learning and Self-Development (3 units)

Area F Ethnic Studies

- One course (3 units)

UPPER-DIVISION (9 units)

- Upper-division B Scientific Inquiry and Quantitative Reasoning (3 units)
- Upper-division C Arts or Humanities (3 units)
- Upper-division D Social Sciences ^ (3 units)

^ Two different disciplines across the 9 units in Area D.

CSU GE

Fall 2025 and Beyond

LOWER-DIVISION (34 units)

Subject Area 1 English Communication

- 1A English Composition (3 units)
- 1B Critical Thinking (3 units)
- 1C Oral Communication (3 units)

Subject Area 2 Mathematical Concepts and Quantitative Reasoning

- One course (3 units)

Subject Area 3 Arts and Humanities

- 3A Arts (3 units)
- 3B Humanities (3 units)

Subject Area 4 Social and Behavioral Sciences ^

- Two courses (6 units)

Subject Area 5 Physical and Biological Sciences

- 5A Physical Science (3 units)
- 5B Biological Science (3 units)
- 5C Laboratory (1 unit)—*May be embedded in 5A or 5B course, as long as 7 units met for lower-division Subject Area 5.*

Subject Area 6 Ethnic Studies

- One course (3 units)

UPPER-DIVISION (9 units)

- Upper-division 5 Science or 2 Mathematical Concepts/Quantitative Reasoning (3 units)
- Upper-division 3 Arts or Humanities (3 units)
- Upper-division 4 Social and Behavioral Sciences ^ (3 units)

^ Two different disciplines across the 9 units in Area 4.

Cal-GETC*

Fall 2025 and Beyond

LOWER-DIVISION (34 units)

Subject Area 1 English Communication

- 1A English Composition (3 units)
- 1B Critical Thinking and Composition (3 units)
- 1C Oral Communication (3 units)

Subject Area 2 Mathematical Concepts and Quantitative Reasoning

- One course (3 units)

Subject Area 3 Arts and Humanities

- 3A Arts (3 units)
- 3B Humanities (3 units)

Subject Area 4 Social and Behavioral Sciences

- Two courses, two different disciplines (6 units)

Subject Area 5 Physical and Biological Sciences

- 5A Physical Science (3 units)
- 5B Biological Science (3 units)
- 5C Laboratory (1 unit)—*May be embedded in 5A or 5B course, as long as 7 units met for lower-division Subject Area 5.*

Subject Area 6 Ethnic Studies

- One course (3 units)

*Cal-GETC is the lower-division transfer pattern for California Community College students transferring to the CSU or the UC.

Note: Nine units of upper-division GE are required of Cal-GETC-certified students after transferring to a CSU campus.

Introducing Cal-GETC

- New labels and organization of the requirements (e.g., A2 Written Communication becomes 1A English Composition);
- A science lab experience is a distinct 1-unit requirement
- One fewer lower-division course is included in the Arts and Humanities area; and
- Lifelong Learning and Self-Development has been removed from the requirements

Fall 2025 Transfer Eligibility

- Upper Division Transfer
 - 60 units of transferrable coursework
 - Overall college GPA of at least a 2.00
 - Be in good standing at the last college attended
 - Complete General Education/Golden Four

Cal-GETC
Area 1: English Communication
1A: English Composition
1B: Critical Thinking
1C: Oral Communication
Area 2: Mathematical Concepts and Quantitative Reasoning



Key Dates

**October 1: Fall 2025
application opens at
6:00 AM**

**December 2: Priority
application deadline
for impacted campuses**

*Students can qualify for up to four fee
waivers*





Transfer Success Pathway Program: CSU Dual Admission

Transfer Success Pathway Program

The Transfer Success Pathway (TSP) program is a transfer program that allows students to enter into an agreement with a CSU campus that guarantees admission for a future term.

- Eligible Participants: First-time freshman entering a community college
 - Not CSU eligible
 - Not able to attend due to personal or financial reasons
- Agreement with one CSU campus required
- Sign agreement in first fall term at CCC, after HS graduation

Agreement cycle is August 1 - September 30. Students can sign an agreement via the Transfer Planner



Fall 2024 TSP Cycle Update

- 3,452 submitted TSP agreements
 - 65% increase over last year
- CSU Campuses/CCCs/Program with most agreements:

CSU Campus	Community College	Program
San Diego	Pasadena City College	Psychology
Fullerton	Southwestern College	Mechanical Engineering
Pomona	El Camino College	Business Administration
Los Angeles	Bakersfield College	Computer Science
Long Beach	Mt. San Antonio College	Public Health



CCCCO ESS 23-35
Memorandum



CSU Transfer Planner

For All Students Planning to Transfer to a CSU

Provides Students

- Free, mobile friendly tool to track transfer eligibility
- Application Jumpstart
- Track General Education Progress
- Access Relevant ASSIST Agreements
- ADT Similarity Information
- Communications and Support from CSU Campus(es) and CO
- Access to TSP Program Sign-up

Provides CCC Counselors

- Dashboards to provide a quick overview of students
- Ability to view and track student progress
- Access to student information based on primary college
- View TSP Student Enrollment Details
- Communications tools to contact students



CSU Tuition & Financial Aid

2025 - 2026 Financial Aid Updates

- FAFSA and CADAA have a target release date of 12/1/2024
- Per the Federal Dept of Education –
 - They are committing to allowing students from Mixed Status Families to submit the FAFSA.
 - They will continue to waive the manual identity validation process for contributors without a SSN.
 - Families will manually enter their income information on the FAFSA.
- Using 2023 Tax Year/Income
- The 25/26 FAFSA has remained largely unchanged from the 24/25 FAFSA.
- On time filing date: 3/2/2025
 - Both FAFSA and CADAA
 - All FA programs

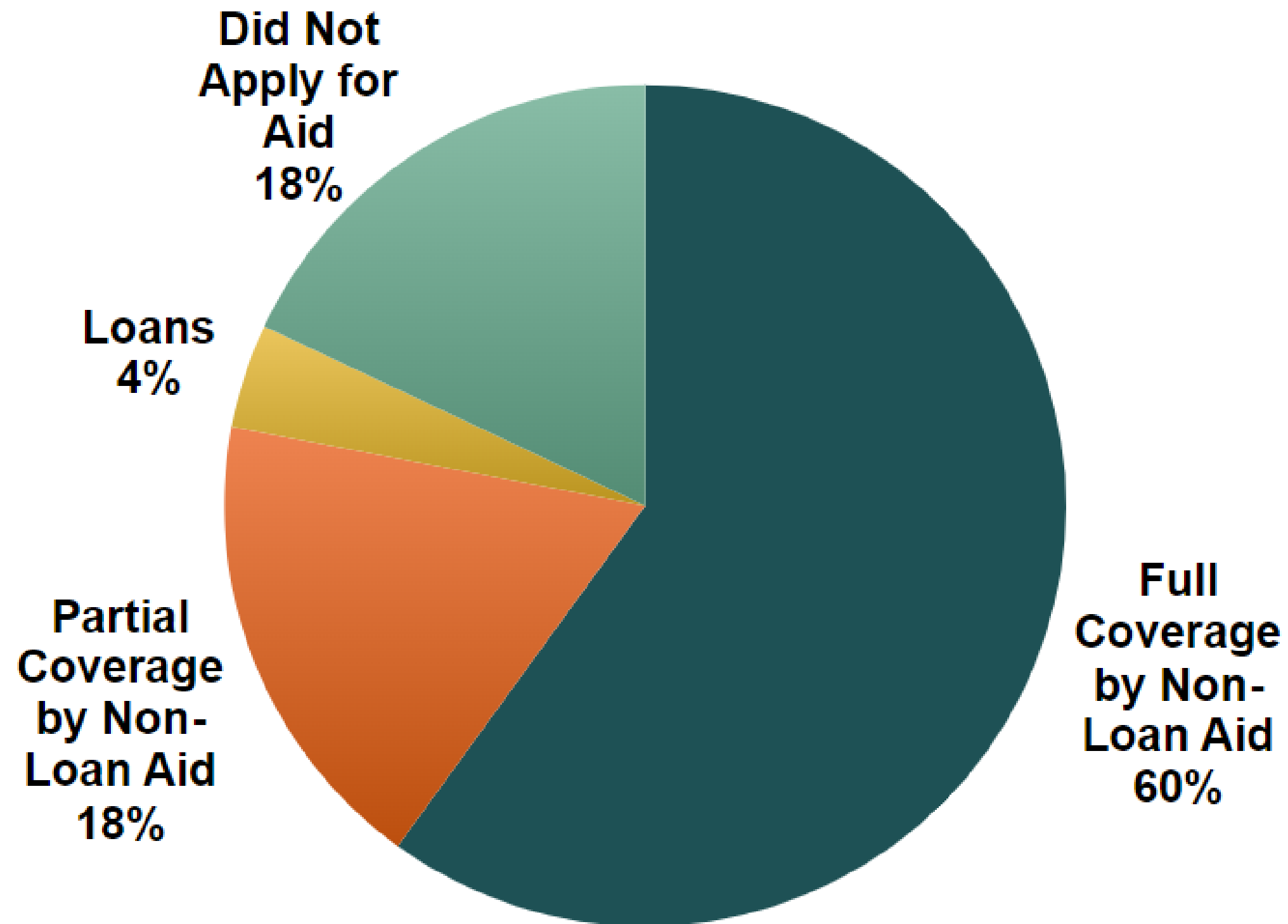


Multi-Year Tuition Plan



	Academic Year					
	2023-24	2024-25	2025-26	2026-27	2027-28	2028-29
Undergraduate (6.1+ units)	\$ 5,742	\$ 6,084	\$ 6,450	\$ 6,838	\$ 7,248	\$ 7,682
Undergraduate (0-6 units)	\$ 3,330	\$ 3,528	\$ 3,738	\$ 3,962	\$ 4,200	\$ 4,452
Credential (6.1+ units)	\$ 6,660	\$ 7,062	\$ 7,488	\$ 7,938	\$ 8,414	\$ 8,918
Credential (0-6 units)	\$ 3,864	\$ 4,098	\$ 4,344	\$ 4,604	\$ 4,880	\$ 5,172
Graduate (6.1+ units)	\$ 7,176	\$ 7,608	\$ 8,064	\$ 8,548	\$ 9,060	\$ 9,604
Graduate (0-6 units)	\$ 4,164	\$ 4,416	\$ 4,680	\$ 4,960	\$ 5,258	\$ 5,574

Paying Undergraduate Tuition



**All Students
Charged Tuition**

CSU Tuition and Fees

Campus	2022-23	2023-24	Change	% Change
University of Connecticut (Storrs, CT)	\$19,434	\$20,366	\$932	4.8%
Rutgers University (New Brunswick, NJ)	16,263	17,239	976	6.0%
Illinois State University (Normal, IL)	15,733	16,021	288	1.8%
Wayne State University (Detroit, MI)	15,883	15,463	(420)	-2.6%
George Mason University (Fairfax, VA)	13,402	13,812	410	3.1%
University of Maryland, Baltimore County	12,606	12,952	346	2.7%
Comparison Average	\$12,451	\$12,740	\$289	2.3%
University of Colorado at Denver	11,800	12,366	566	4.8%
Arizona State University at Tempe	11,618	12,052	434	3.7%
University of Texas at Arlington	11,314	11,314	0	0.0%
Cleveland State University	10,430	10,638	208	2.0%
State University of New York at Albany	10,468	10,468	0	0.0%
Georgia State University at Atlanta	10,268	10,268	0	0.0%
University of Wisconsin at Milwaukee	9,620	10,020	400	4.2%
North Carolina State University	9,128	9,105	(23)	-0.3%
University of Nevada at Reno	8,797	9,012	215	2.4%
California State University	\$7,524	\$7,622	\$98	1.3%

Paying for College

- Federal, State, and Institutional Grants
 - Pell Grant
 - Supplemental Educational Opportunity Grant
 - Cal Grant
 - CSU State University Grant (SUG)
 - Educational Opportunity Grants
- Scholarships
- Middle Class Scholarship 2.0
- Federal Work Study
- Federal Student Loans or DREAM Loans
- Veteran's Aid
- Californians For All Volunteer Program





Counselor Resources



Campus Events



Transfer Enrollment Guides



CASPER



CSU Outreach Publications



Transfer Guides



Cal State Apply Pre-launch



Admissions & Financial Aid



CSU Newsletter

