



The California
State University



FACT BOOK

2025



TABLE OF CONTENTS

- 1 Introduction
- 7 Student-Focused Initiatives
- 11 Students
 - 13 Enrollment and Demographics
 - 14 Applying
 - 16 Paying for College
- 19 Alumni
- 25 Employees
- 29 Research and Community Impact
- 35 CSU Funding
- 41 CSU Leadership



“The California State University remains the nation’s preeminent university for educating America’s new majority, comprised of low-income students, students of color, first-generation students, adults and students from all walks of life seeking brighter opportunities. As dynamic stewards of place for the communities they serve and as powerful pipelines for the state’s diverse and highly educated workforce, our 23 universities are essential to California’s continued vitality, leadership and global impact.”

Mildred García
Chancellor, The California State University



INTRODUCTION

The California State University is the country's largest four-year public university system, providing opportunities for upward mobility to a broadly diverse student body and empowering those students to become leaders in the changing workforce.



**NATION'S
LARGEST**

four-year public
university system



**23
UNIVERSITIES**

and seven
off-campus centers



**MORE THAN
460,000**

students

THE CSU

- Educates one of the most ethnically, economically and academically diverse student bodies in the country.
- Is consistently recognized for providing opportunities for social mobility.
- Provides degree opportunities at one of the most affordable rates nationwide.
- Enrolls more than 460,000 students.
- Employs more than 63,000 faculty and staff.
- Serves each of California's regions, from Humboldt to San Diego.
- Offers more than 4,000 degree programs that align with workforce demands.
- Has a robust and supportive community of more than 4.3 million alumni.



Awards
NEARLY HALF
of the state's
bachelor's degrees



Confers more than
125,000
degrees
annually



Returns nearly
\$7 FOR EVERY \$1
invested by CA



Stretches
800 MILES
from Humboldt to
San Diego



Helps create
209,400
jobs annually



Generates
\$26.9 BILLION
in industry activity

MASTER PLAN FOR HIGHER EDUCATION

The CSU was created in 1960 under the California Master Plan for Higher Education. The university system draws its students from the top third of the state's high school graduates and is California's primary undergraduate teaching institution. In continuing to expand its educational scope and help meet the state's workforce demands for skilled professionals, the CSU offers independent doctorates in audiology, education, nursing practice, occupational therapy, physical therapy and public health.

THE VALUE OF A CSU DEGREE

The CSU offers a life-changing education at one of the most affordable tuition rates in the country. Students learn from world-class faculty, gain valuable hands-on experience and receive strong career advisory support to ensure they graduate job-ready.

The CSU plays a critical role in providing future leaders with the skills and knowledge they need to thrive in the workforce and help drive California's economy. More than 4,000 degree programs align with the state's workforce needs in fields such as business management, engineering and health care.

At \$6,450 per academic year for full-time undergraduates, the CSU's tuition is among the lowest in the country. In 2024, all 23 universities ranked among the top 100 "Best Bang for the Buck" universities in the West, according to Washington Monthly magazine.

To help students turn their dream of college into reality, the university offers a variety of financial aid options including grants, loans, scholarships, fellowships, veterans aid and work study. During the 2023-24 academic year, almost 84% of students who applied for aid received some form of financial assistance.

INCLUSIVE EXCELLENCE

The CSU strives to create a welcoming and supportive environment for all members of its campus communities and provides more than half of all undergraduate degrees earned by California's Latinx, African American and Native American students combined. Twenty-one CSU campuses are currently recognized by the U.S. Department of Education as Hispanic-Serving Institutions (HSIs), colleges and universities with a Latinx student enrollment of at least 25%.

SOCIAL MOBILITY

Earning a CSU degree can change the trajectory of students' lives, as well as the lives of their family members, by opening doors to opportunities for social mobility. CSUs have garnered multiple top 10 spots in a wide range of national social mobility rankings for colleges and universities. These recognitions demonstrate the CSU's focus on educating, graduating and elevating all students regardless of their economic or family situations—and on dismantling systemic barriers that students from underresourced communities often face. In doing so, the CSU enriches the state's economy by graduating students who represent diverse perspectives and lived experiences.





STUDENT-FOCUSED INITIATIVES

The CSU's student-focused initiatives aim to ensure that all students—regardless of racial, ethnic or financial background—have the same opportunities to benefit from the transformative power of a CSU degree. As the CSU processes the results from Graduation Initiative 2025, it has reimagined a bold new vision of student success through its Year of Engagement process.

GRADUATION INITIATIVE 2025/YEAR OF ENGAGEMENT

Since its launch in 2015, Graduation Initiative 2025 has aimed to increase graduation rates for all CSU students while eliminating opportunity and achievement gaps. The initiative has brought completion rates to all-time highs and continues to focus on narrowing equity gaps between underserved students and their peers. Moving beyond GI 2025, the CSU has embarked on the Year of Engagement project—the most comprehensive and intentional consultation in the system's history. This project has harnessed the collective wisdom of more than 1 million CSU community members to identify promising practices, recognize areas for additional improvement and assess effectiveness of previous initiatives.

DEGREES CONFERRED IN 2023-24

Bachelor's Degrees	103,795	82.9%
Master's Degrees	20,670	16.5%
Doctoral Degrees	721	0.6%
Total	125,186	100%

SUPPORTING DIVERSE COMMUNITIES OF STUDENTS

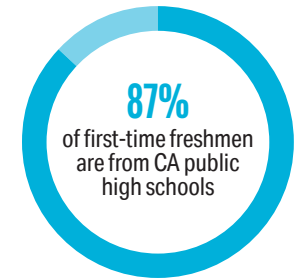
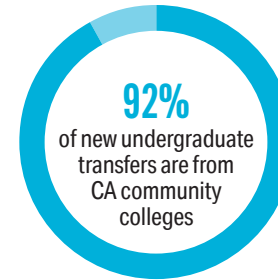
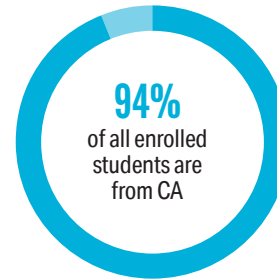
To provide the most effective support for the diverse communities of students across the CSU system, the CSU has established several outreach efforts, including the Hispanic-Serving Institutions Global Equity Hub, the CSU Asian American, Native Hawaiian & Pacific Islander Student Achievement Program, and the Central Office for the Advancement of Black Student Success. The CSU also has programs that offer support for student parents, foster youth and students experiencing food insecurity. All university programs and activities are open and available to all regardless of race, sex, color, ethnicity or national origin.





STUDENTS

CSU students are largely from California, and most of them remain in the state after graduation, applying the skills and knowledge they have learned to help the Golden State's economy thrive.





461,612

students enrolled in the CSU in fall 2024

MORE THAN HALF*
of CSU students are from traditionally underrepresented backgrounds



NEARLY HALF
of undergraduates receive the Pell Grant

NEARLY ONE-THIRD
of undergraduates are the first in their families to attend college

*Actual total is 51.9%.

ENROLLMENT BY CAMPUS

FALL 2024	
Bakersfield	10,036
Channel Islands	4,880
Chico	14,581
Dominguez Hills	14,262
East Bay	10,892
Fresno	24,310
Fullerton	42,999
Humboldt	6,045
Long Beach	41,189
Los Angeles	22,740
Maritime Academy	804
Monterey Bay	7,302
Northridge	36,848
Pomona	27,196
Sacramento	30,883
San Bernardino	17,900
San Diego	39,373
San Francisco	22,357
San José	33,158
San Luis Obispo	22,842
San Marcos	14,655
Sonoma	5,784
Stanislaus	9,295
International Programs	421
CalStateTEACH	860
Total	461,612

FALL 2024 ENROLLMENT (TOTAL 461,612)

BY GRADE*		
Freshman	86,218	18.7%
Sophomore	60,821	13.2%
Junior	112,417	24.4%
Senior	148,792	32.2%
Graduate	42,430	9.2%
Teaching Credential Postbaccalaureate	7,836	1.7%
Other Postbaccalaureate	3,098	0.7%
BY AGE*		
Under 18	9,029	2.0%
18-24	349,074	75.6%
25-29	55,426	12.0%
30-34	21,980	4.8%
35-39	10,938	2.4%
40-49	10,519	2.3%
Over 49	4,646	1.0%
BY ETHNICITY**		
Hispanic/Latinx	225,946	48.9%
White	92,741	20.1%
Asian	71,425	15.5%
Two or More Races	21,527	4.7%
Black or African American	19,100	4.1%
International Student	13,718	3.0%
Unknown Race and Ethnicity	14,965	3.2%
Native Hawaiian or Other Pacific Islander	1,306	0.3%
American Indian or Alaskan Native	884	0.2%
BY GENDER		
Female	258,550	56.0%
Male	203,062	44.0%

*Totals may not add up to 100% due to rounding.

**According to federal reporting standards.

GRADUATE STUDIES

- In fall 2024, the CSU enrolled 53,364 postbaccalaureate/graduate students.
- The CSU awarded 20,670 master's degrees in 2023-24.
- Doctor of Audiology, Doctor of Education, Doctor of Nursing Practice, Doctor of Occupational Therapy, Doctor of Physical Therapy, Doctor of Public Health and other doctoral programs serve 2,649 students from diverse backgrounds, preparing them for top leadership roles.

APPLYING

With 23 universities and thousands of degrees to choose from, the CSU offers more choices and connections than any other public higher education institution in the nation. Students planning to enter the CSU can apply through the online application tool, Cal State Apply, at calstate.edu/apply.

Due to the large number of applicants, some universities have additional admissions criteria for particular majors or for students who live outside the local campus area. Universities utilize local admission guarantee policies for students who graduate or transfer from high schools and community colleges that are historically served by a CSU in that region.

ADMISSION REQUIREMENTS

Freshman Applicants

First-time freshman applicants must meet the standards in each of the following areas:

- Graduate from high school or equivalent
- Complete required college preparatory coursework
- Earn suitable grades in college preparatory coursework
- Achieve a qualifying GPA

Transfer Applicants

There are many paths to attending the CSU, including the guaranteed Transfer Success Pathway program for recent high school graduates seeking to continue their education after no more than three years at a community college. Many transfer students enter as upper-division transfers and must complete at least 60 semester or 90 quarter units and required general education (GE) before transferring. Some campuses accept lower-division transfers for students with fewer than 60 semester or 90 quarter units.

Students who have earned an Associate Degree for Transfer (ADT) and are accepted to a similar degree program will be admitted to the CSU with junior status. Students can explore and plan for a successful transfer to any of the 23 CSUs using the free online CSU Transfer Planner tool.

Graduate Applicants

To apply for admission to graduate or postbaccalaureate studies, a student must:

- Earn a baccalaureate degree from an accredited institution with at least a 2.5 GPA.
- Be in good academic standing while satisfactorily meeting the professional, personal, scholastic and other standards for graduate study.

Learn more at calstate.edu/apply



CSU TUITION AND FEES: 2025-26*

- Undergraduate: \$6,450
- Credential: \$7,488
- Graduate/Postbaccalaureate: \$8,064
- Audiology Doctorate: \$16,560
- Education Doctorate: \$13,296
- Nursing Practice Doctorate: \$17,160
- Occupational Therapy Doctorate: \$19,320
- Physical Therapy Doctorate: \$19,320
- Public Health Doctorate: \$20,034

(Campus mandatory fees add an average of \$1,981** to student costs.)

Graduate Business Professional Fee

State university tuition fee plus \$303 per semester unit or \$202 per quarter unit.

Nonresident Fee

State university tuition fee plus \$444 per semester unit or \$296 per quarter unit.

*Rates are for the 2025-26 academic year.

**Based on 2024-25 tuition.

FINANCIAL AID

The CSU provides an affordable, quality education. In 2023-24, nearly \$5 billion was distributed to more than 369,000 students. The average award was \$13,523. In fall 2023, 94% of undergraduate students with family incomes under \$75,000 who applied for aid received full or partial grants, scholarships or fee waivers to cover the cost of tuition. Plus, 64% of the CSU's bachelor's degree recipients in 2023-24 graduated with zero student loan debt.

Presidential Scholars programs, which provide full scholarships to National Merit scholars and high school valedictorians, are also available at many CSU campuses.

Learn more at calstate.edu/financial-aid

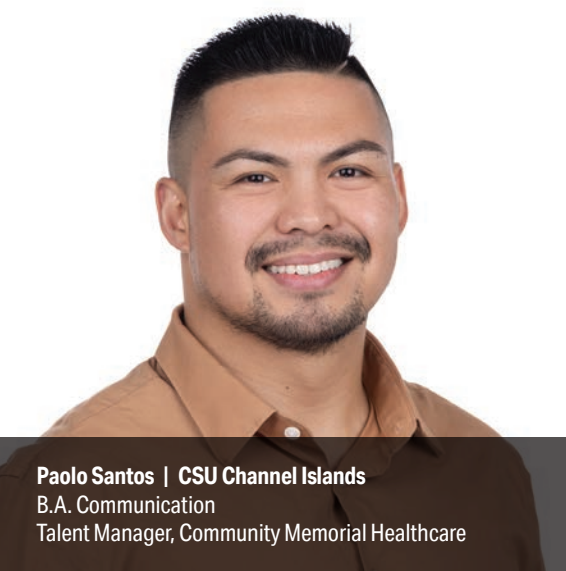




ALUMNI

CSU alumni make up a global network that is over 4.3 million strong. As ambassadors to the nation and world, its alumni demonstrate the power of possibility that comes with a CSU degree.

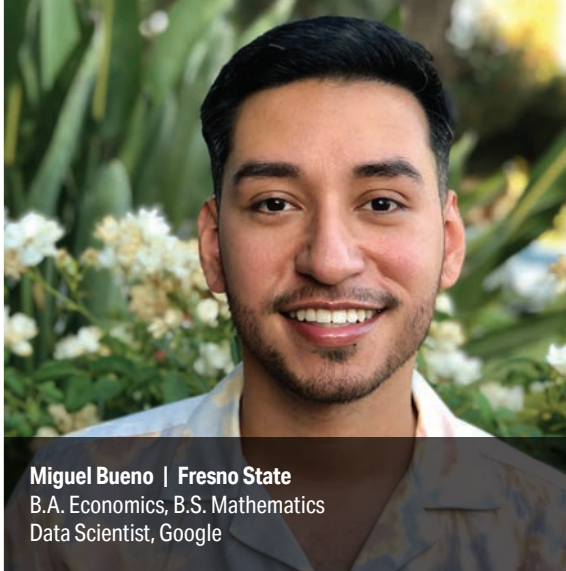
MADE
— in the —
CSU



Paolo Santos | CSU Channel Islands
B.A. Communication
Talent Manager, Community Memorial Healthcare



Chardae Jenkins | CSU Dominguez Hills
B.A. Communications, Public Relations and Advertising
Senior Manager of Multicultural Publicity, Netflix



Miguel Bueno | Fresno State
B.A. Economics, B.S. Mathematics
Data Scientist, Google



Ken Ballinger | Cal Poly Humboldt, Sacramento State
B.A. Music Education, B.S. Mechanical Engineering
Automation Engineer, United States Mint



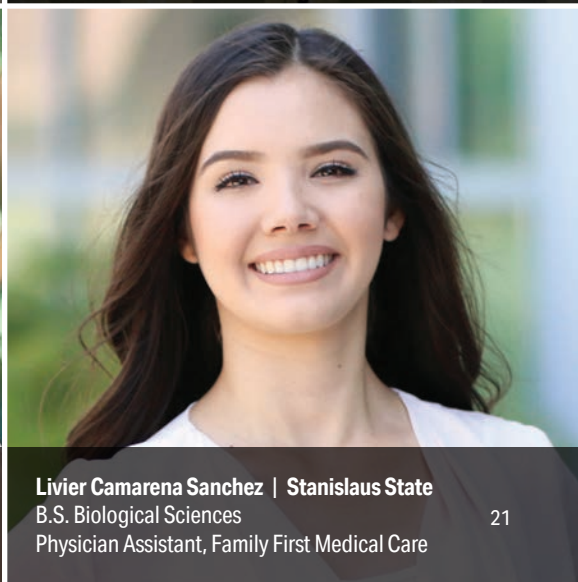
Nancy Luong | Cal State Long Beach
B.S. Marketing
Digital Program Manager, Salesforce



Patrice Rodriguez | Cal State Monterey Bay
B.S. Business Administration, MBA
Procurement Category Manager, Taylor Farms



Chris Wachira | San Francisco State
B.S. Nursing, MPA
CEO, Wachira Wines



Livier Camarena Sanchez | Stanislaus State
B.S. Biological Sciences
Physician Assistant, Family First Medical Care



MORE THAN 4.3 MILLION
alumni and counting



ONE IN 20

Americans with a college degree earned it at the CSU



ONE IN 10

employees in California is a CSU graduate



ALUMNI

network is larger than the population of 23 U.S. states



ALUMNI COUNCIL

As the representative voice of alumni, the CSU Alumni Council meets regularly to discuss alumni support of the university. Using the power of our alumni network, the council supports student success by engaging alumni as volunteers, mentors and donors.

Learn more at calstate.edu/alumni



EMPLOYEES

Much like the students the CSU serves every day, its faculty and staff are exceptionally diverse and talented, making the CSU a special place to both work and learn. Their unparalleled commitment to quality instruction and provision of services is shaping the future of California.

HEADCOUNT OF EMPLOYEES BY EMPLOYEE GROUP, FALL 2024

DESCRIPTION*	FULL-TIME	PART-TIME	TOTAL	% OF TOTAL
Instructional Faculty	13,648	13,857	27,505	43.4%
Non-Instructional Faculty	1,079	335	1,414	2.2%
Staff	19,609	631	20,240	31.9%
Executive and Management	4,799	16	4,815	7.6%
Academic Student Employees	58	9,343	9,401	14.8%
Total	39,198	24,182	63,375	100.0%

INSTRUCTIONAL FACULTY BY TIME BASE, FALL 2024

TIME BASE	COUNT	% OF TOTAL
Full-Time	13,648	49.6%
Part-Time	13,857	50.4%
Total	27,505	100.0%

FULL-TIME INSTRUCTIONAL FACULTY BY ACADEMIC RANK, FALL 2024

ACADEMIC RANK	FULL-TIME COUNT	% OF TOTAL
Professor	4,681	34.3%
Associate Professor	3,168	23.2%
Assistant Professor	2,691	19.7%
Lecturer	3,108	22.8%
Total	13,648	100%

Learn more at calstate.edu/csu-system/faculty-staff/employee-profile

*Data includes all employees, with the exception of non-represented academic student employees, other intermittent or casual employees, and faculty teaching in extension, special sessions and summer sessions.





RESEARCH AND COMMUNITY IMPACT

CSU students apply the knowledge gained in the classroom to find solutions to real-world problems through involvement in applied research and service learning. Under the guidance of world-renowned faculty who are experts in their fields, students develop leadership skills while benefiting their communities.



RESEARCH, SCHOLARSHIP AND CREATIVE ACTIVITY

From improving public health and mitigating climate change to amplifying diverse voices through artistic expression, CSU students engage in hands-on learning that drives innovation and social impact while enhancing their education and preparing them for leadership in a rapidly evolving world.

EXTERNAL FUNDING, RESEARCH GROWTH

The CSU's research enterprise continues to expand, with extramural funding increasing by \$164 million over the past five years. In 2022-23, CSU research expenditures reached \$812 million, a \$104 million increase from the previous year.

San Diego State holds the Carnegie R1 (Very High Research Activity) designation, eight CSUs hold the R2 (High Research Activity) classification, and 12 CSUs hold the new RCU (Research Colleges and Universities) designation announced in February 2025, reinforcing the system's growing research prominence. Faculty published more than 43,000 articles between 2019 and 2023, many of which were co-authored by students. In addition, 83.2% of 2023-24 bachelor's degree recipients participated in research, creative activity or internships.

Federal agencies provide 63% of the CSU's research funding, and state sources contribute 23%. Major federally sponsored research expenditures in 2023-24 included:

- \$161 million from the Department of Health and Human Services
- \$114 million from the Department of Education
- \$75 million from the National Science Foundation
- \$31 million from the Department of Agriculture
- \$29 million from the Department of Defense

LEADING CYBERSECURITY EDUCATION

Enrolling more than 600 students in its cybersecurity program, Cal State San Bernadino stands out as a nationally recognized leader in cybersecurity education. Building on its efforts in this field, CSUSB has partnered with San José State and Fresno State to develop curriculum to provide students with the skills necessary to combat evolving global threats and protect critical systems.

CLIMATE ADAPTATION CONSORTIUM

The new CSU Consortium on Climate Adaptation—launched in January 2025 and led by San Diego State—unites all 23 universities to advance climate action research and education. The consortium will strengthen partnerships with high schools, community colleges and University of California campuses; enhance student career preparation and expand research on climate resilience and environmental sustainability. It joins 11 other CSU research consortia, which provide experiential learning opportunities and address California's most pressing needs.

Learn more at calstate.edu/impact-of-the-csu/research

COMMUNITY ENGAGEMENT AT THE CSU

For 27 years, the CSU Center for Community Engagement (COCCE) has been connecting students with ways to serve their local communities. During this time, COCCE has prepared 1 million CSU graduates to become changemakers across California—as well as boosted graduation rates, addressed equity gaps and made a difference in the community.

During the 2023-24 academic year, campus centers for community engagement and service learning, in partnership with 1,000 faculty and 3,723 community organizations, have:

- Enabled 72,000 CSU students to participate in an academic community-engaged learning or hands-on community service experience.
- Offered more than 2,800 service-learning sections to more than 43,000 students who contributed upward of 752,000 hours of service connected to their coursework.
- Engaged more than 27,000 students to provide an additional 1.7 million hours of direct service through programs such as AmeriCorps, days of service, alternative breaks and other civic engagement opportunities.
- Raised \$24 million from a variety of private funders and public initiatives to support community engagement, a return of \$24 for every dollar invested by the state.

Learn more at calstate.edu/ccce



4,723
partners



72,000
student volunteers



More than
2.45 MILLION
hours of service



\$24 MILLION
raised



CSU FUNDING

The CSU's operating budget has two main funding sources: the state General Fund and student tuition and fees. State funding covers 60% of the CSU's operating costs, with tuition and fees making up the remainder.

Auxiliaries and philanthropic support generate additional revenue needed for essential services that supplement state-supported activities.

CAMPUS BUDGETS 2024-25

(General Fund and Gross Tuition Fee & Other Fee Revenue)

Bakersfield	\$178,880,000
Channel Islands	\$132,271,000
Chico	\$257,786,000
Dominguez Hills	\$237,554,000
East Bay	\$218,018,000
Fresno	\$388,019,000
Fullerton	\$596,791,000
Humboldt	\$170,203,000
Long Beach	\$604,511,000
Los Angeles	\$391,585,000
Maritime Academy	\$50,681,000
Monterey Bay	\$149,959,000
Northridge	\$572,465,000
Pomona	\$388,416,000
Sacramento	\$450,691,000
San Bernardino	\$314,523,000
San Diego	\$626,100,000
San Francisco	\$407,344,000
San José	\$496,704,000
San Luis Obispo	\$522,752,000
San Marcos	\$235,761,000
Sonoma	\$131,544,000
Stanislaus	\$168,487,000
Campus Total	\$7,691,045,000
Chancellor's Office	\$225,012,000
Systemwide Provisions	\$550,438,000
Total	\$8,466,495,000

CSU 2024-25 STATE SUPPORT

General Fund Appropriations*	\$5,099,436,000
Gross Tuition Fees and Other Fee Revenue	\$3,367,059,000
Total General Fund and Student Fees	\$8,466,495,000
Higher Ed Certificate/Degree Programs to Support Workforce Needs*	\$5,000,000
Total State Support	\$8,471,495,000

Learn more at calstate.edu/budget

*Fiscal year 2024-25 one-time budget allocations appropriated by the 2024 Budget Act (SB 108).

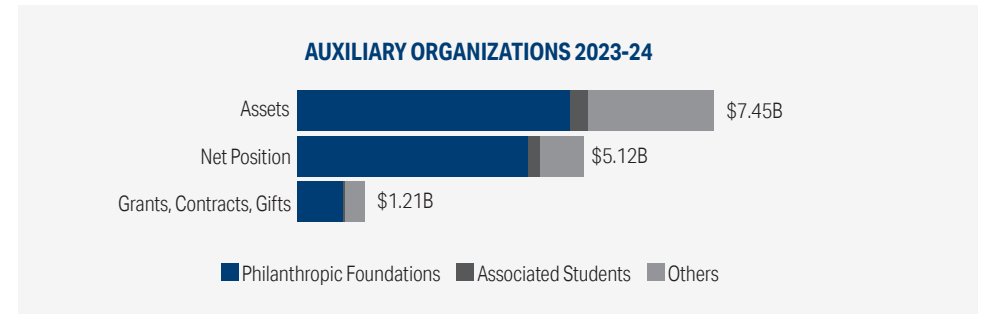
AUXILIARY ORGANIZATIONS

Auxiliary organizations* provide a wide array of support services, programs and facilities that further the educational mission of the CSU. Funds are used to facilitate students' cocurricular activities, administer research programs, operate student unions, support recreational programs, coordinate commercial enterprises and develop public-private partnerships on behalf of the university. The 94 self-supporting auxiliary organizations operate without the state's General Fund revenue and are organized on each campus as separate legal entities.

In 2023-24:

- The CSU's auxiliary organizations reported \$7.45 billion in aggregate assets—25% of the CSU's total combined assets. Most of these assets were held by philanthropic foundations with \$4.89 billion of total assets mainly from endowment investments.
- Auxiliary organizations' net position (i.e., equity) was \$5.12 billion, of which \$3.57 billion is restricted by external parties (i.e., donor endowments). This represents 96% of the CSU's combined restricted net position.
- The aggregate revenue from grants, contracts and gifts was \$1.21 billion, which represents 30% of the CSU's combined total grants, contracts and gift revenues.

Learn more at auxiliary.calstate.edu



*Also called discretely presented component units.



PHILANTHROPIC SUPPORT

The CSU is grateful for the philanthropic support of its donors. Their support underscores their enduring confidence in the university's ability to elevate the lives of students, families and communities through the transformative power of higher education.

In 2023-24, the university received \$626 million in gift commitments and almost \$448 million in gift receipts. This support enriches campus communities, drives innovation in education and empowers students to achieve success in their academic and professional pursuits. Donor support also underscores the vital role of the CSU in providing high-quality, accessible and impactful education that benefits individuals and strengthens communities across California.

Highlights of Giving in 2023-24:

- Gifts from 222,115 individual donors totaled almost \$184 million.
- Gifts from alumni comprised 38% of individual giving, with \$74 million in contributions.
- Gifts from organizations totaled \$264 million, including \$78 million from foundations and \$99 million from corporations.
- The total endowment market value hit an all-time high at \$2.8 billion systemwide, providing support for programs and students in perpetuity.

Learn more at calstate.edu/donorsupport



\$626 MILLION
in charitable
gift commitments



222,115
individual
donors



\$2.8 BILLION
endowment
market value



CSU LEADERSHIP

Responsibility for the CSU is vested in a 25-member Board of Trustees, the majority of whom are appointed by the governor to eight-year terms. Faculty, alumni and two student trustees serve two-year terms. The trustees appoint the chancellor, who is the CSU's chief executive officer, and the presidents, who are the chief executive officers of their respective universities and report to the chancellor. The trustees, chancellor and presidents develop systemwide policies.



BOARD OF TRUSTEES
(ex officio members)

Governor Gavin Newsom
 Lieutenant Governor Eleni Kounalakis
 Speaker of the Assembly Robert Rivas
 State Superintendent of Public Instruction Tony K. Thurmond
 Chancellor Mildred García

APPOINTED MEMBERS
(term ends during the year shown)

Larry L. Adamson (alumni trustee) (2026)
 Diego Arambula, Vice Chair (2028)
 Raji Kaur Brar (2029)
 Jack B. Clarke Jr., Chair (2027)
 Douglas Faigin (2025)
 Jean Picker Firstenberg (2026)
 Wenda Fong (2032)
 Mark Ghilarducci (2031)
 Leslie Gilbert-Lurie (2030)
 Jazmin Guajardo (student trustee) (2026)
 Lillian Kimbell (2025)
 Julia I. Lopez (2028)
 Jonathan Molina Mancio (student trustee) (2025)
 Jack McGrory (2031)
 Sam Nejabat (2027)
 Anna Ortiz-Morfit (2025)
 Yammilette "Yami" Rodriguez (2029)
 Christopher Steinhauser (2026)
 Jose Antonio Vargas (2030)
 Darlene Yee-Melichar (faculty trustee) (2025)

CAMPUS PRESIDENTS
(date is the appointment year)

Bakersfield	Vernon B. Harper Jr. (2023)
Channel Islands	Richard Yao (2022)
Chico	Stephen Perez (2023)
Dominguez Hills	Thomas A. Parham (2018)
East Bay	Cathy A. Sandeen (2020)
Fresno	Saúl Jiménez-Sandoval (2021)
Fullerton	Ronald S. Rochon (2024)
Humboldt	Michael E. Spagna (Interim) (2024)
Long Beach	Jane Close Conoley (2014)
Los Angeles	Berenecea Johnson Eanes (2023)
Maritime Academy	Michael J. Dumont (Interim) (2023)
Monterey Bay	Vanya Quiñones (2022)
Northridge	Erika D. Beck (2020)
Pomona	Soraya M. Coley (2014)
Sacramento	Luke Wood (2023)
San Bernardino	Tomás D. Morales (2012)
San Diego	Adela de la Torre (2018)
San Francisco	Lynn Mahoney (2019)
San José	Cynthia Teniente-Matson (2022)
San Luis Obispo	Jeffrey D. Armstrong (2010)
San Marcos	Ellen J. Neufeldt (2019)
Sonoma	Emily F. Cutrer (Interim) (2024)
Stanislaus	Britt Rios-Ellis (2024)

Note: Leadership is current as of March 2025.

CHANCELLOR'S COUNCIL

Mildred García
 Chancellor

Andrew Jones
 Executive Vice Chancellor and General Counsel

Steve Relyea
 Executive Vice Chancellor and
 Chief Financial Officer

Albert A. Liddicoat
 Interim Vice Chancellor, Human Resources

Vlad Marinescu
 Vice Chancellor and Chief Audit Officer

Greg Saks
 Vice Chancellor, External Relations
 and Communications

Nathan S. Evans
 Deputy Vice Chancellor, Academic and Student
 Affairs, Chief Academic Officer

Dilcie D. Perez
 Deputy Vice Chancellor, Academic and Student
 Affairs, Chief Student Affairs Officer

Danielle Garcia
 Associate Vice Chancellor and Chief of Staff

Michelle Kiss
 Associate Vice Chancellor and Chief of Staff,
 Board of Trustees

Learn more at calstate.edu/leadership

Strategic Communications and Brand Marketing
401 Golden Shore, 4th Floor
Long Beach, CA 90802-4210

(562) 951-4800
calstate.edu

f X @calstate

@theosu

@CSU Chancellor's Office

CSU The California State University

Produced by MarComm | WZ14470 | 03.25