

# ‘CAMP FIRE’ CSU Chico LESSONS LEARNED



## CSU, Chico

Marvin Pratt

Stacie Corona

Mike Thorpe

Director – EHS/EP

AVP – Financial Services

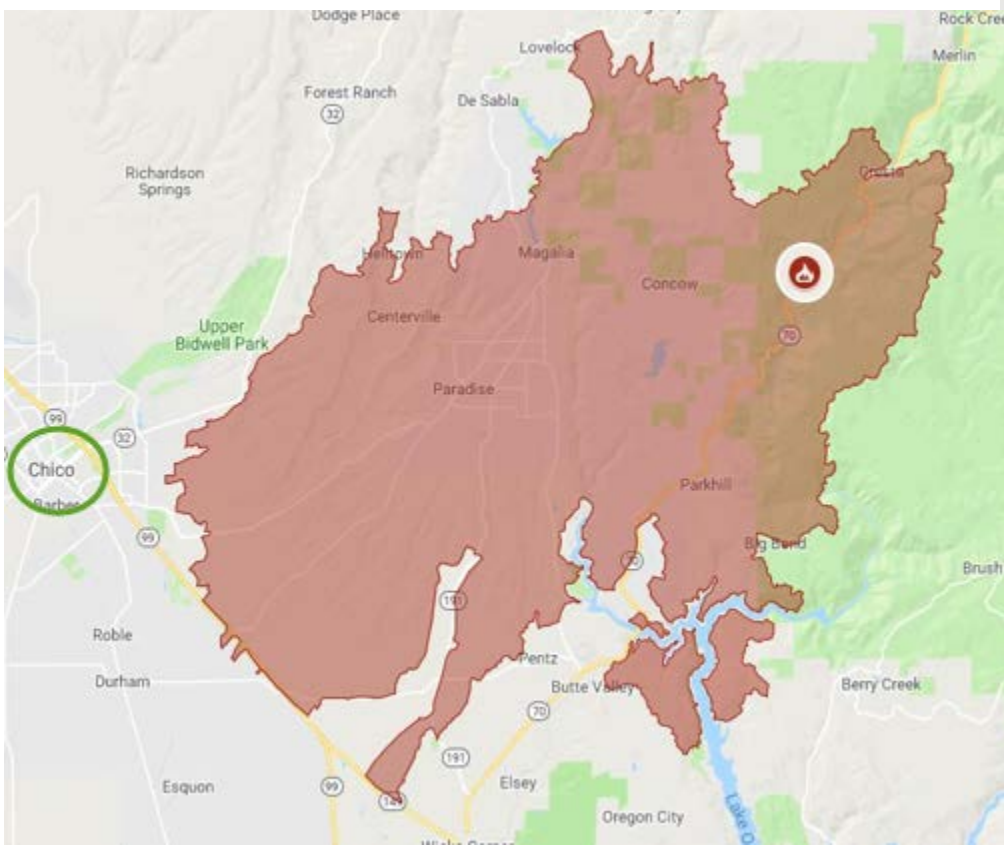
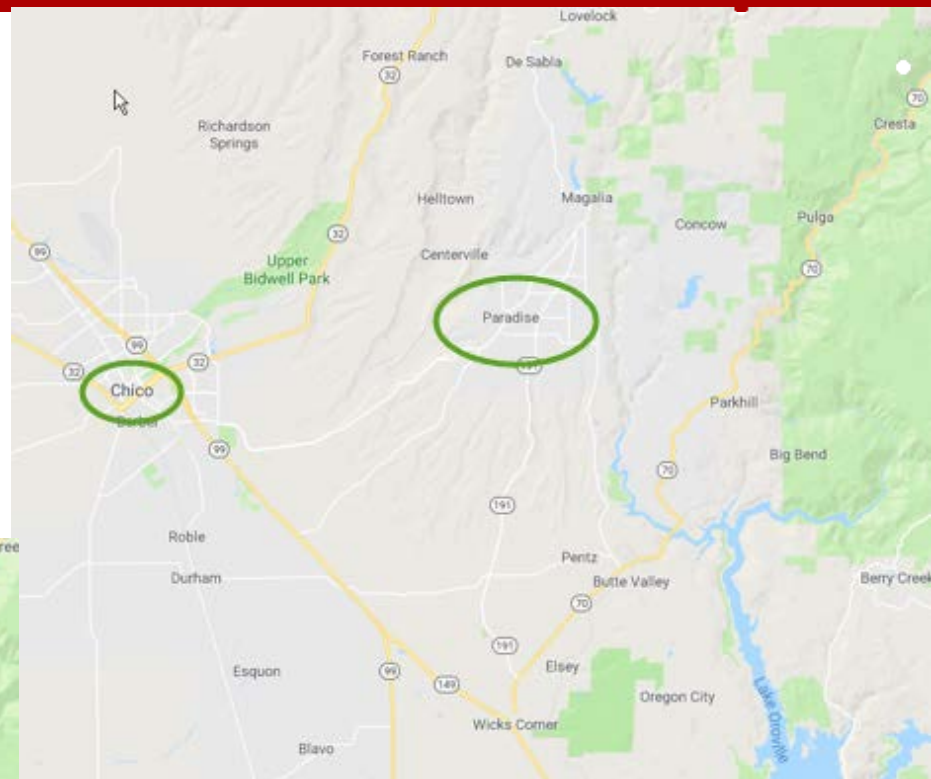
Director – Risk Mgmt





# WHERE IS PARADISE?

- Located 8 miles East of Chico
- Positioned in the forest, uphill
- Pulga (fire started), 10 miles NE Paradise



## CAMP FIRE STATS

- Deadliest fire in CA history
- 153,336 acres
- 18,804 structures destroyed  
~15,000 homes
- Deaths - 85 Civilians

# INITIAL RESPONSE and EOC

- Within hours, cancelled classes
- Smoke – not an issue (initially)
- Activated EOC
  - Complete disruption of work and classes
  - Only “Essential Personnel” were contacted to work
  - Communication hub
- Closed University for next 2 days and then for the following week. Thanksgiving week helped buy time.

# CHICO TAKES ACTION

- Provided shelter & mutual aid to Red Cross, Paradise Hospital & High School, Emergency Personnel, Cal Fire, etc.
- Support Staff, Faculty and Students
  - 10-15% workforce affected by fire, FMS/Housing
  - 2 out of 5 person office responsible for Emergency Prep affected by fire
- Established campus website and frequent communication via email
- ASI Dining Services provided kitchens for World Kitchen & Today Show, Thanksgiving Dinners



## Lost Homes

165+ Faculty/Staff

150+ Students



## WILDCATS RISE WEBSITE

[www.csuchico.edu/campfire](http://www.csuchico.edu/campfire)

- Slogan of “Wildcats Rise”
- Created quickly by EOC and built out as emergency progressed
- Updated on a daily basis
- Resources, FAQ’s, Donations, Financial Assistance, Housing Assistance



communicate • understand • support

# CAMPUS WEBSITES



## UPDATES

Latest information from the University on campus conditions and operations.



## GIVE TO RECOVERY FUND

The Wildcats Rise Fire Recovery Fund supports students and employees directly impacted by the fire.



## FAQS

Continuously updated page with frequently asked questions about the campus fire response.



## OFFER AND FIND RESOURCES

The Wildcats Rise Facebook group is a place for the campus community to connect and support each other.



## APPLY FOR AID

Explore options for campus financial assistance for the students, faculty, and staff impacted by the Camp Fire.



## WILDCATS CONNECT

Faculty and staff may offer or request housing for/from Chico State employees.



# UNIVERSITY ADVANCEMENT – FUNDRAISING CAMPAIGN

## Wildcats Rise - Fire Recovery Fund



CHICO STATE

**Supporting Students, Faculty, and Staff  
Impacted by the Camp Fire**

**\$698,867.43 Total**

Raised



\$700,000 Goal

4461

Donors

156

Fundraisers

[Make a Donation](#)

[Become a Fundraiser](#)



# THANKSGIVING DINNER

Guy Fieri – celebrity chef







# RESOURCES for IMPACTED STUDENTS, FACULTY & STAFF

## Wildcat Resource Center

- Opened and staffed 2 dates
  - Nov 19th campus was closed and Nov 26th 1st day campus reopened
- Financial Assistance Application and Funding
  - [Wildcats Rise Fire Recovery Fund grants](#) (students, faculty, and staff)
  - [Faculty and Staff Emergency Loan Program](#) (faculty and staff)
  - [Student Short-term Loans and Grants](#) (students)

Check Pick-up at Campus Info Center/Wildcat Resource Center – multiple days

- Coordinated hand out of all paychecks, financial aid checks, ST loan payments for the campus, ASI and Foundation checks
- Constant monitoring of HR/Payroll email account with staff/students & coordination

Basic Needs Project – helped students with housing and food needs

# WHAT WERE CHALLENGES?

- What if we had to evacuate residence halls early on
- Impacts to faculty, staff and students
- Physical impact to campus
- How to open if smoke persists
- How long can we stay closed (academics)
- Non-impacted staff and faculty (“what do you mean we’re not essential”)





# OTHER IMPACTS

Chancellor's Office Activation of CSU-wide EOC -  
due to other fires, air quality and campus closures

Other campuses closed due to poor air quality:

- Sac State closed 7 days
- Sonoma, Stanislaus, East Bay, San Francisco, San Jose, Maritime
- UC Davis, UC Berkeley
- Butte College and various community colleges

**Business Continuity...?**

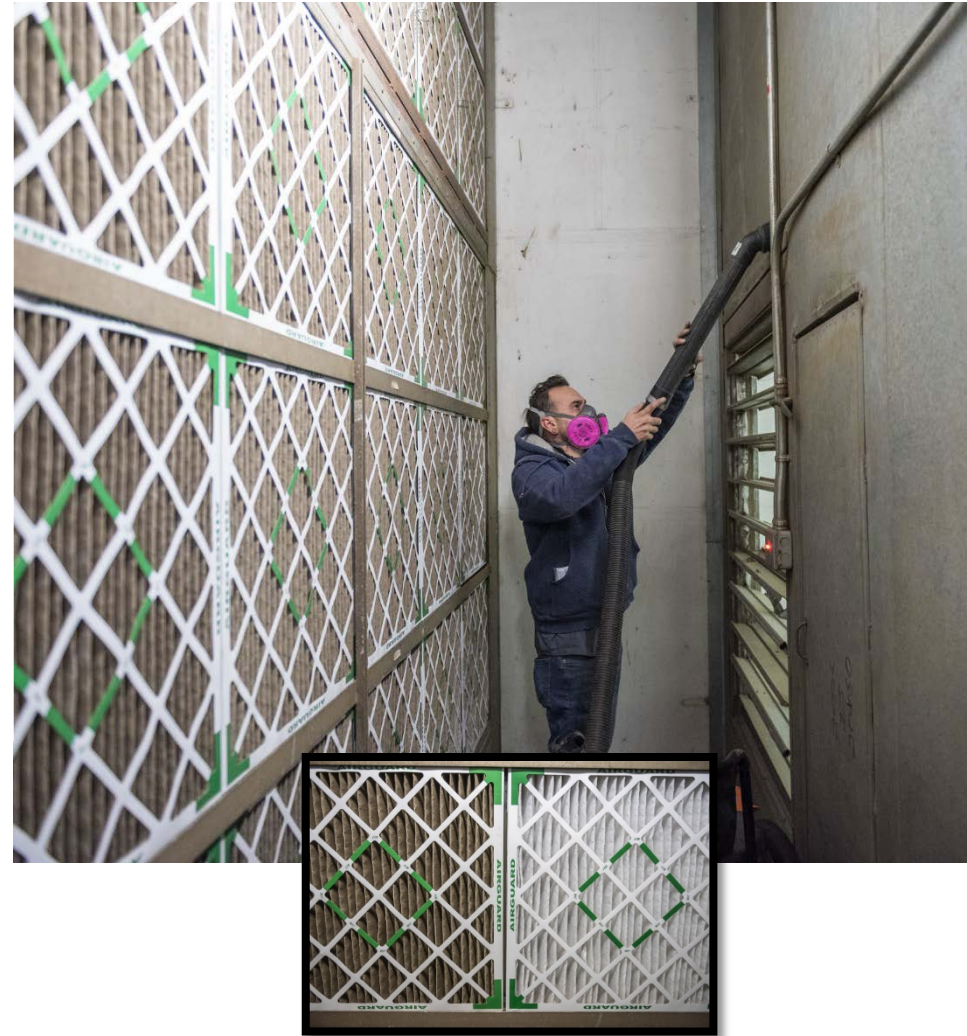
# OTHER IMPACTS (cont.)

- No Housing availability in Chico or surrounding cities and inflated home prices
- Nowhere for interviewees, visiting faculty, speakers, campus attorney to stay
- Mail/Post Office – routed thru Chico Post Office and thousands in line each day waiting for their mail
- Closed K-12 schools for 3 weeks due to the fire
- Kept all kids out of school for same amount of time
- Butte County Office of Education was lead agency coming up with plan to educate over 4,000 students (Paradise/Magalia area)
  - K-5th Teachers/Students - various Butte County schools
  - 6th-12th Teachers/Students – Independent Study model with drop-in labs at Chico Mall with long term solution at Chico Airport and empty OSH building



# PREPARE TO REOPEN

- Changed filters
- Cleaned intakes
- Cleaned entryways
- Wiped common area surfaces
- Messaged others to do the same
- Communicate, Communicate...you know!



# CAMPUS COSTS INCURRED

- O/T costs, food, masks, air filters, air purifiers, cleaning of buildings
- \*\* EOC personnel logs were challenging – Track O/T via normal process
- Employees that lost homes also lost University owned property – replaced safety boots, uniforms, police gear, laptops, university equipment, etc.
- Loss of revenue (athletic events on state side, museum and theatrical performances on auxiliary side)
- Paid students and hourly employees as if regularly scheduled
- CRU activated and provided assistance to campus and Butte County
- Forensic Anthropology Department called upon for assistance with identification of human remains



# INSURANCE & FEMA CLAIMS

- Insurance and FEMA Claims independent of each other
- Insurance straight forward
- We were advised to charge Butte County for incurred CRU costs and Forensic Anthropology costs – required execution of MOU
- FEMA – very detailed and cumbersome with ambiguity, 75% vs. 90%, mutual aid to county so submitting through them
- Begins with Submission of the following 3 forms which must be submitted within 30 days of the declaration of National Disaster:
  - “Request for Public Assistance” form
  - “Project Assurances for Federal Assistance” form
  - Cal OES “Signature Authority” form
- Cal OES referenced another form of recovery – California Disaster Assistance Act but state agencies are exempt from recovery

# FEMA CLAIM

- FEMA assigns a Program Delivery Manager who will schedule an Exploratory Call to:
  - Establish a rapport
  - Gather information on the impact and costs related to the event and identify campus needs
  - Prepare for the Recovery Scoping Meeting (RSM)
  - Identify the appropriate personnel to attend the RSM
  - Schedule the RSM
- Recovery Scoping Meeting high level review of damages or “Projects”
- Damage Inventory
- FEMA Portal

Damage Inventory  
01/26/2017

CAT	Name	Damage Description	Cause of Damage	Address 1	Address 2	City	State	Zip	Site Inspection Required?	% Work Complete	Approximate Cost	Labor Type	Potential Mitigation Issue?	Applicant Priority
A	Debris Removal	Debris throughout the City - trees and limbs	Hurricane	314 E Rustin St		Glennville	Georgia	30427	No	100%	\$200,000.00	FAL/Contract	No	Urgent
B	Emergency Protective Measures	The Police Department ensured public safety by blocking off roadways and directing traffic. Public Works and Administration also assisted in response efforts.	Hurricane	705 N Caswell St		Glennville	Georgia	30427	No	100%	\$50,000.00	FAL	No	Low
B	Alternate power source for emergency	Lift station not working due to power outage	Hurricane	134 S Veterans Blvd		Glennville	Georgia	30427	No	100%	\$3,300.00	FAL	Yes	Medium
C	Roads & Bridges	Downed trees and branches throughout the City	Hurricane	10278 E. Oglethorpe Highway	City of Glennville	Glennville	Georgia	30427	Yes	100%	\$50,000.00	FAL/Contract	No	High
D	Utilities	Floodgate damage, WTBC Want HMP	Hurricane	Glennville Utility District	4th Ave and 2nd Street	Glennville	Georgia	30427	Yes	0%	\$40,000.00	FAL		
E	Equipment for Fire Department	Tree landed on firetruck causing damage.	Hurricane	134 S Veterans Blvd		Glennville	Georgia	30427	Yes	0%	\$500.00	FAL/Contract	No	High
E	Glennwanis Hotel	Historic building owned by the city. Roof was damaged.	Hurricane	Glennwanis Hotel	209-215 East Barnard Street	Glennville	Georgia	30427	Yes	0%	\$75,000.00	FAL/Contract	Yes	Low
E	Glennville City Library	Shingles are missing and roof has leaks to the interior.	Hurricane	408 East Barnard Street	Glennville City Library	Glennville	Georgia	30427	Yes	0%	\$10,000.00	FAL/Contract	No	Medium
E	City owned dump truck	Damage occurred during debris removal.	Hurricane	134 S Veterans Blvd	City Hall	Glennville	Georgia	30427	Yes	0%	\$6,000.00	FAL	No	Medium
E	Police Department Building	Roof leakage and wet carpet	Hurricane	705 North Caswell Street	Police Department	Glennville	Georgia	30427	Yes	0%	\$5,000.00	FAL/Contract	No	Low
G	Recreation Dugout	Two (2) dugouts were damaged at Glennville Recreation Park	Hurricane	320 Veterans Drive	Glennville Park	Glennville	Georgia	30427	No	100%	\$10,000.00	FAL	No	Low
G	Recreation Park	Damage to park includes: fencing, shelter, building. They also had food spoilage due to power outage.	Hurricane	320 Veterans Drive		Glennville	Georgia	30427	Yes	0%	\$50,000.00	FAL		Medium

## Emergency Work

Address an immediate threat:

- A** Debris removal
- B** Emergency protective measures

## Permanent Work

Restoration of:

- C** Roads/bridges
- D** Water control facilities
- E** Buildings/equipment
- F** Utilities
- G** Parks, recreational, and other facilities

- Dashboard
- My Organization ▼  
California State University, Chico  
(000-UK4PW-00)
- Organization Profile
- Organization Personnel
- Applicant Event Profiles
- Exploratory Calls
- Recovery Scoping Meetings
- Projects
- Damages
- Work Order Requests
- Work Orders
- My Tasks ▼
- Calendar
- Utilities ▼
- Resources
- Intelligence ▼

«

# My Organization Profile

California State University, Chico (000-UK4PW-00)

DOWNLOAD
 EDIT

## General Information

<p><b>STATE/TRIBE/TERRITORY</b> <a href="#">California Governor's Office of Emergency Services (CalOES)</a></p> <p><b>LEVEL 2</b> California State University, Chico</p> <p><b>TYPE</b> Public/State Controlled Institution of Higher Education</p> <p><b>EIN NUMBER</b> 68-0219874</p>	<p><b>IS ACTIVE?</b> Yes</p> <p><b>FEMA PA CODE</b> 000-UK4PW-00</p> <p><b>DUNS NUMBER</b> 076096650</p>
---	--

- Personnel  MANAGE
- Locations  MANAGE
- Counties with Facility  MANAGE
- Insurance Profile  UPLOAD INSURANCE DOCUMENTS  HELP
- Applicant Event Profiles  UPLOAD  DOWNLOAD ▼  MANAGE
- Documents  UPLOAD  DOWNLOAD ▼  MANAGE
- Action Log

Processing



Dashboard

My Organization ▾

California State University, Chico  
(000-UK4PW-00)

Organization Profile

Organization Personnel

Applicant Event Profiles

Exploratory Calls

Recovery Scoping  
Meetings

Projects

Damages

Work Order Requests

Work Orders

 My Tasks ▾

Calendar

Utilities ▾

Resources

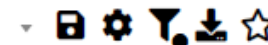
Intelligence ▾

«

# My Damages

Filters &gt;

My Damages Active for PA




SHOW/HIDE COLUMNS

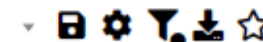
Damage #	Category	Name	Damage Description	Status	Address	Project #	Project Title
273468	G	Insurance Deductible	Insurance Deductible	Active	401 W First Street, Chico, California 95936		
273132	B	EPM Provision of Supplies & Commodities	Costs include Includes respirators, food, misc. supplies	Active	400 W. First St., Chico, California 95931	91136	DR 4407 California State University Chico Emergency Protective Measures
273131	B	Emergency Operations Center Costs	EMERGENCY OPERATIONS CENTER - Wages and OT labor, other costs associated with EOC such as meals	Active	400 W. First St., Chico, California 95930	91136	DR 4407 California State University Chico Emergency Protective Measures
273130	B	Emergency Campus Clean Up	Emergency Clean Up- campus ash clean-up (additional debris bin only); Replaced air filters; Costs wi...(Show More)	Active	400 W. First Street, Chico, California 95929	91136	DR 4407 California State University Chico Emergency Protective Measures
273133	E	Destroyed Contents	Laptops destroyed by fire when staff telework and had to emergency evacuate from home	Active	400 W. First St., Chico, California 95932	91138	DR 4407 California State University Chico Content Destroyed

- Dashboard
  - My Organization ▼  
California State University, Chico  
(000-UK4PW-00)
  - Organization Profile
  - Organization Personnel
  - Applicant Event Profiles
  - Exploratory Calls
  - Recovery Scoping Meetings
  - Projects
  - Damages
  - Work Order Requests
  - Work Orders
  - My Tasks ▼
  - Calendar
  - Utilities ▼
  - Resources
  - Intelligence ▼
- «

## My Projects

Filters >

My Projects Active for PA



Search...

SHOW/HIDE COLUMNS

Project #	Category	Title	Type	Process Step	Activity Completion Deadline	# Damages
91136	B - Emergency Protective Measures	DR 4407 California State University Chico Emergency Protective Measures	Work Completed / Fully Documented	Pending EEI Completion	05/12/2019	3
91138	E - Buildings and Equipment	DR 4407 California State University Chico Content Destroyed	Work Completed / Fully Documented	Pending EEI Completion	05/12/2020	1

25 Showing 1 to 2 of 2 entries (filtered from 4 total entries)

Previous 1 Next

# A YEAR LATER...NOW WHAT?

- Large retirement loss of workforce
- Challenges recruiting
- Lack of affordable housing
- Student housing changing
- Changes to local communities
- “The new norm”



# ADDITIONAL THOUGHTS

Recent Fires – campus closures, campus communication, PSPS (utility power shutdowns)

New OSHA Regulations – air quality index (AQI)

Donation Management

CRU Costs - tracking lessons

**Carr Fire PM2.5 AQI Measurements for Chico**

<b>Date</b>	<b>Measurement</b>
July 23 2018	>50
July 24	>50
July 25	53
July 26	67
Saturday, July 27	70
Sunday, July 28	105
July 29	118
July 30	123
July 31	132
August 1	131
August 2	89
Saturday, August 03	109
Sunday, August 04	158 *
August 5	124
August 6	126
August 7	152 *
August 8	145
August 9	153 *
Saturday, August 10	121
Sunday, August 11	104
August 12	59

**Camp Fire PM2.5 AQI Measurements for Chico**

<b>Date</b>	<b>Measurement</b>
Nov. 8, 2018	26
Nov. 9	330
Nov. 10	296
Nov. 11	98
Nov. 12	187
Nov. 13	185
Nov. 14	251
Nov. 15	356
Nov. 16	445
Nov. 17	240
Nov. 18	196
Nov. 19	154
Nov. 20	171
Nov. 21	111
Nov. 22	12



# THANK YOU AND HAPPY TO ANSWER ANY QUESTIONS!

[www.csuchico.edu/campfire](http://www.csuchico.edu/campfire)



Marvin Pratt, Director - Environmental Health & Safety (Emergency Prep)

[mpratt@csuchico.edu](mailto:mpratt@csuchico.edu)

(530) 898-5126

Stacie Corona, AVP - Financial Services

[scorona@csuchico.edu](mailto:scorona@csuchico.edu)

(530) 898-5730

Mike Thorpe, Director – Risk Management & Business Services

[methorpe@csuchico.edu](mailto:methorpe@csuchico.edu)

(530) 898-6588