



You've Weathered the Response to a Disaster-

Fitting the Pieces Together to

RECOVER

November 2019



CSU Northridge

Earthquake of January 17,
1994 4:30 am

University of North Carolina
Wilmington

Hurricane Florence,
September 2018

Recovery at UNCW

DOBO HALL

WHERE NEWS COMES FIRST

6:12 | 65°

\$139.6 MILLION IN FLORENCE DAMAGE AT UNCW

BOARD OF TRUSTEES HEARS UPDATE

WECT
NEWS 6



Recovery at UNCW

CSU The California State University
WORKING FOR CALIFORNIA



ONE HOUR EARLIER

400 UNCW STUDENTS LOSE RESIDENCE HALL
APARTMENTS TOO DAMAGED AFTER FLORENCE

10:01 63°

WECT 6
NEWS

Recovery – CSU

Jan 1994	CSUN Earthquake
Oct 2003	CSUSB Grand Prix Wildfire, SDSU Cedar Wildfire
Oct 2007	CSUSB Wildfire, SDSU Witch Wildfire
May 2013	CSUCI Wildfire
April 2014	Humboldt State / I-5 Bus Accident
May 2014	CSUSM Wildfire, FMAG Recovery
April 2015	CSULA Flooding

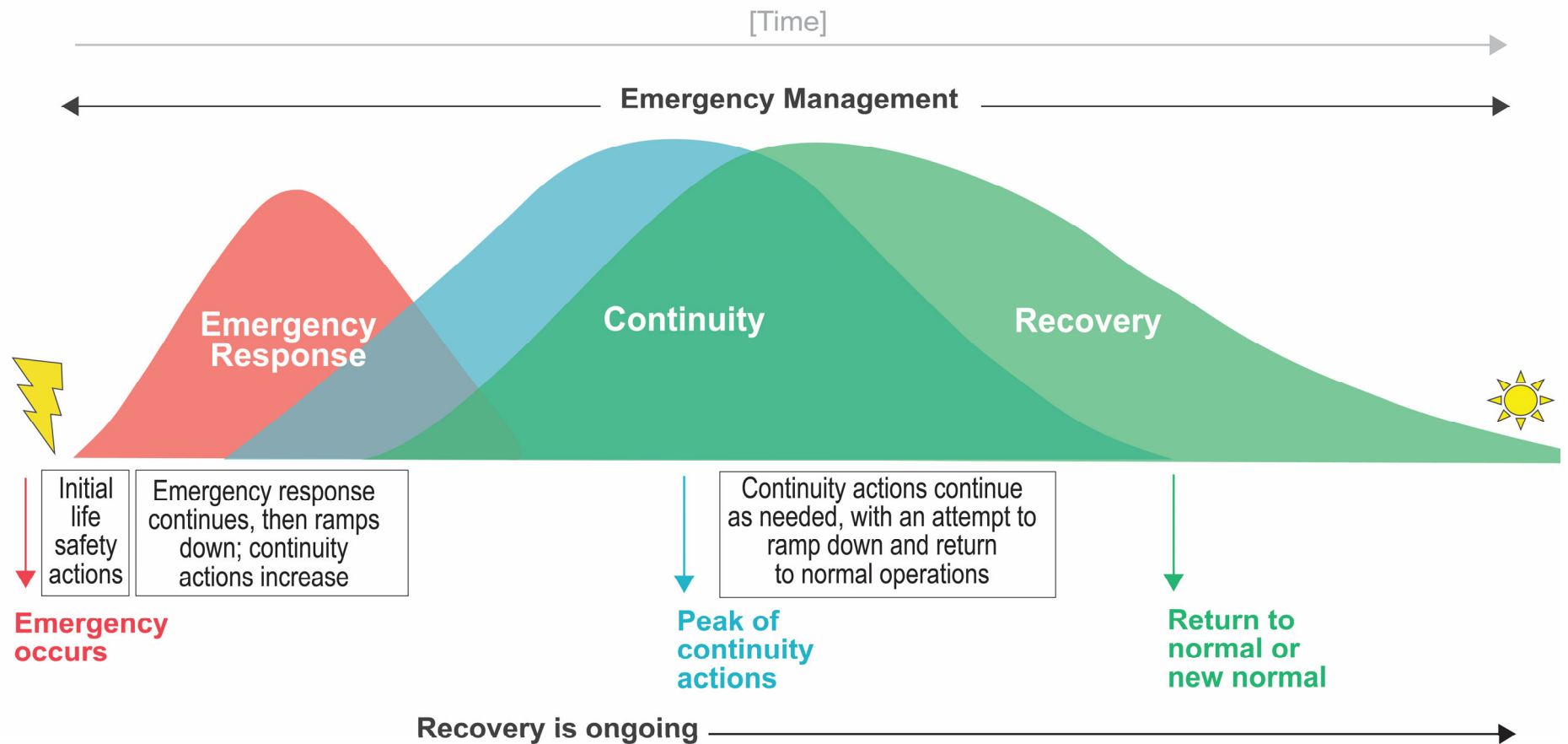
Recovery – CSU



July 2016	CSUMB Soberanes Wildfire, Campus staging
Feb 2017	Cal Poly SLO, Flooding & Mudslide
Sept – Dec 2017	Wildfires: Cal Poly SLO, Sonoma St, CSUSM, CSUCI
Nov – Dec 2018	Wildfire and Smoke: Chico St, CSUCI
Oct 2019	Wildfire and/or Smoke: Cal Maritime, Humboldt St, CSUF, CSUCI, Sonoma St, CSUSB

Response, Continuity, Recovery

Incident Timeline



Recovery Areas of Focus

After Sonoma Fires, 2017

- 1 - Economy
 - 2 – Natural Resources
 - 3 – Safety Net Services
 - 4 – Community Preparedness
 - 5 – Housing
-

Recovery Areas of Focus

After Hurricane Maria 2017 – Re-Imagining Puerto Rico

- 1 – Economic Development
 - 2 – Energy
 - 3 – Health, Education, and Social Services
 - 4 – Physical Infrastructure
 - 5 – Natural Infrastructure
-

National Disaster Recovery Framework

CSU The California State University
WORKING FOR CALIFORNIA



National Disaster Recovery Framework

Second Edition

NDRF – Six Key Areas

Housing

Infrastructure Systems

Economic

Natural and Cultural Resources

Health and Social Services

Community Planning and Capacity Building

Disaster Recovery – Higher Education

HOUSING -

- University owned dorms & housing
- Off-campus housing
- Commuter student's housing
- Coordination of housing requests & issues

Challenges

- Limited local housing
 - Safety and Security
 - Access and Functional Needs
 - Pets
-

Disaster Recovery – Higher Education

INFRASTRUCTURE -

- Damage Assessment
- Debris Management
- Restore Systems (Facilities, Utilities and IT)
- CSU contracts: Belfor, Agility, Granger, et. al.
- Implement long-term mitigation measures

Challenges

- Structural Integrity of Facilities
 - Access and Functional Needs
 - Safety during recovery
-

Disaster Recovery – Higher Education

ECONOMIC –

- Tuition
- Auxiliary Services (e.g., bookstore and food services)
- Sports venues
- Performing Arts venues

Challenges

- Reputation and perception of services
 - Contractual obligations
 - Scheduled Events
-

Disaster Recovery – Higher Education

ACADEMIC -

- Academic calendar / graduation dates
- Retention of faculty and staff
- Provision of specialized learning space (science, arts, sports, medical, etc.)
- Long-term virtual learning system

Challenges

- Reputation of degree program
 - Financial Aid deadlines and issues
 - Admissions deadlines
 - Lab animal and research projects
-

Disaster Recovery – Higher Education

NATURAL RESOURCES-

- Parks and sensitive habitats
- Water ways and coastal areas
- Endangered species
- Research study areas associated with campus (e.g., Moss Landing)

Challenges

- Prioritizing funding
 - Grant funded projects
-

Disaster Recovery – Higher Education

CULTURAL RESOURCES -

- Libraries
- Museums & art collections
- Geologic or archeologic material collections
- Facilities & landmarks of historical interest
- Gravesites, Native burial sites

Challenges

- Impact on foundations
 - Reputation
-

Disaster Recovery – Higher Education

HEALTH AND SOCIAL SERVICES -

- Student Health Center
- Children's Centers
- Veteran's Centers
- Support for returning students
- Long-term Psychological Health
- Utilize CAPS for mutual assistance

Challenges

- Health Center may be damaged
 - Health Center accreditation standards
-

Disaster Recovery – Higher Education

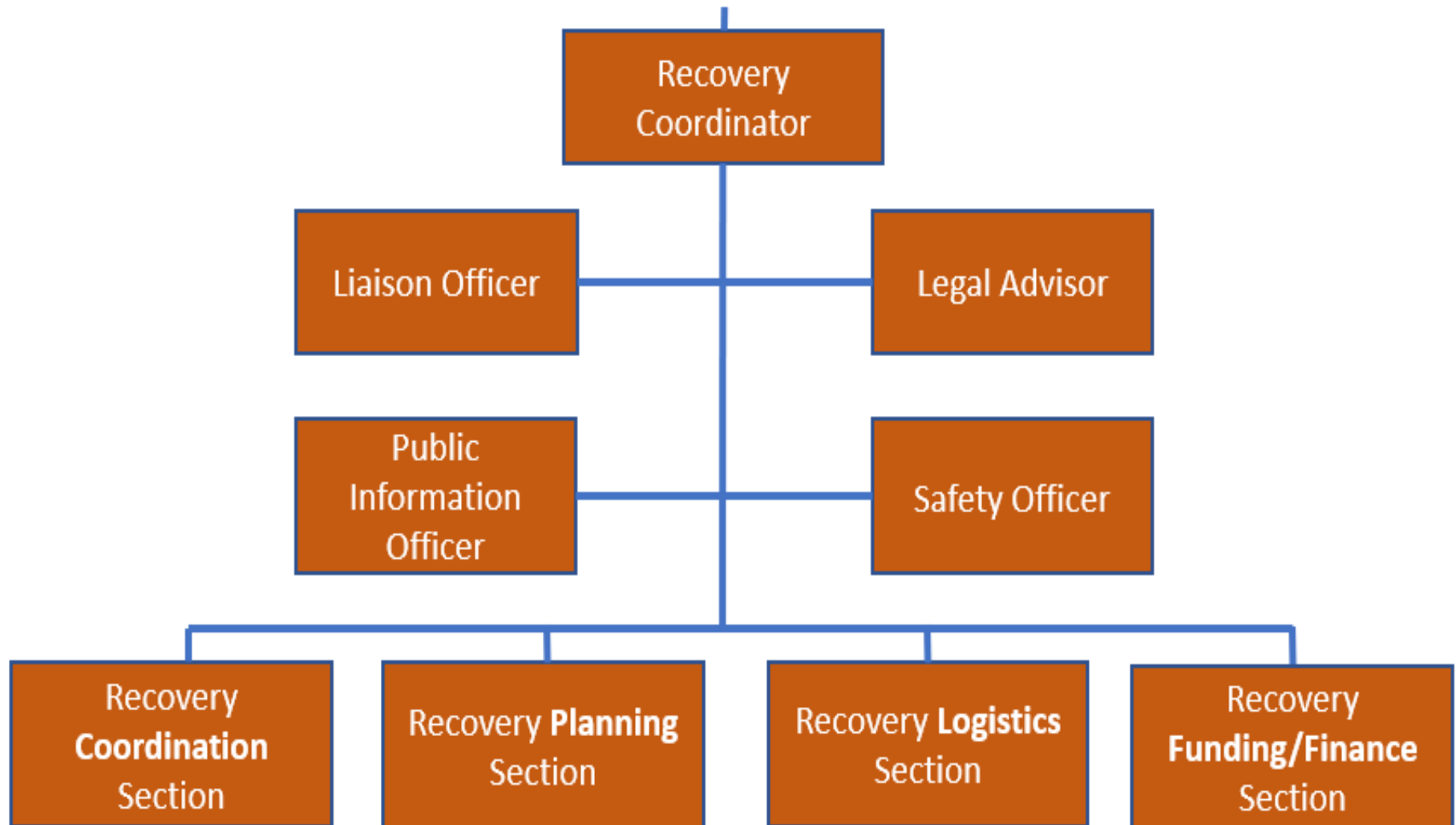
CAMPUS COMMUNITY PREPAREDNESS -

- Pre-Disaster Recovery Planning
- University student, faculty and staff personal preparedness
- Upgrading of campus-wide safety measures
- Plan for/implement long-term mitigation measures
- Post-disaster prioritization, strategic planning, communications, and situation status

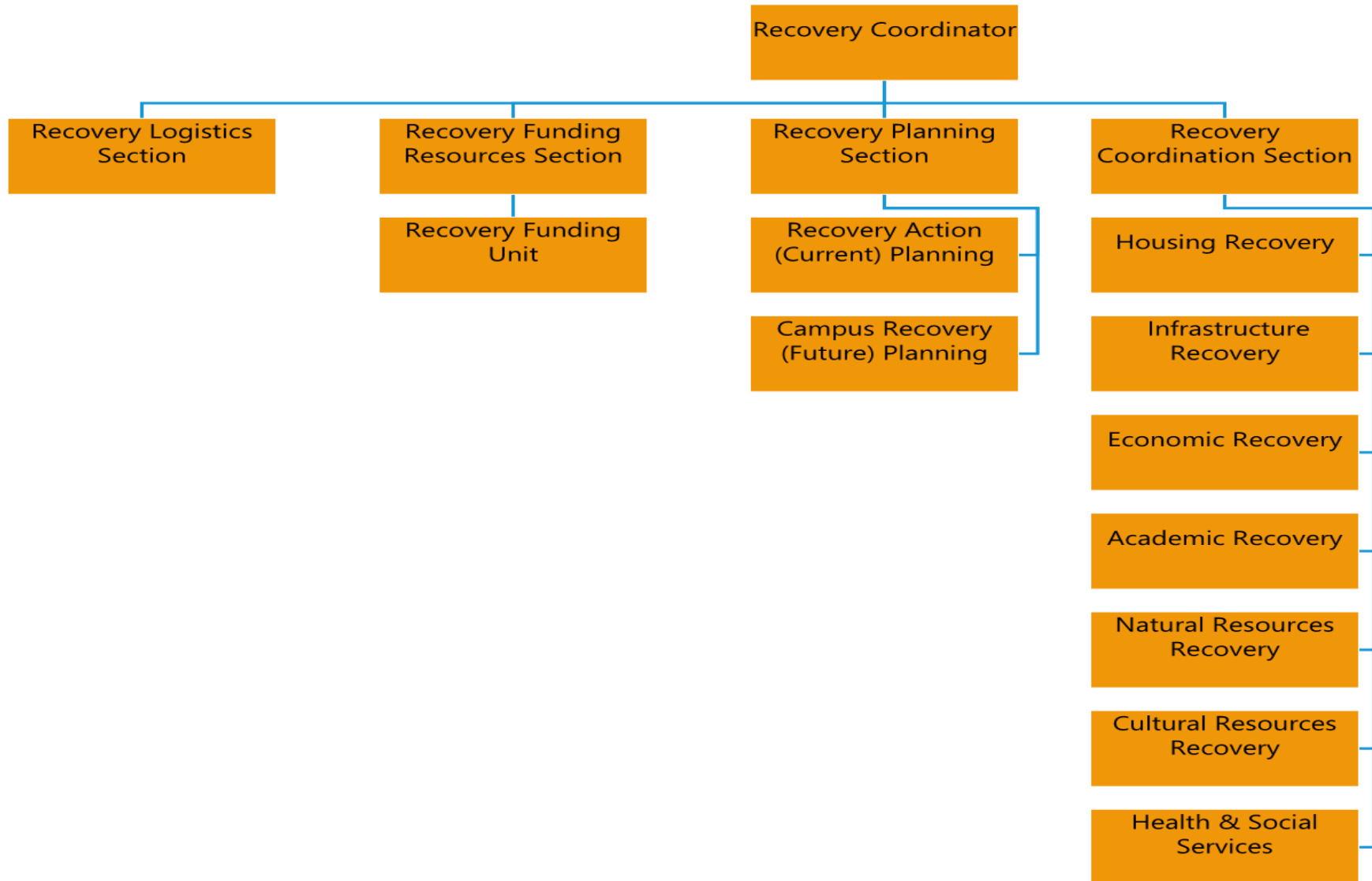
Challenges

- Funding, staffing and focus
 - Coordination and communication of efforts
-

Disaster Recovery – SAMPLE Organization



Disaster Recovery – Organization



RECOVERY SCENARIO ACTIVITIES

Questions



Thank You!



Rick Blackburn

Assistant Director, Emergency Preparedness &
Continuing Operations
CSU Office of the Chancellor
(562) 257-0304 (cell)
rblackburn@calstate.edu

Frank Castro-Wehr

Director, Readiness and Resiliency
Witt O'Brien's
916.265.8364 cell
fcastro-wehr@wittobriens.com