



# CSU Artificial Intelligence (AI) Strategy

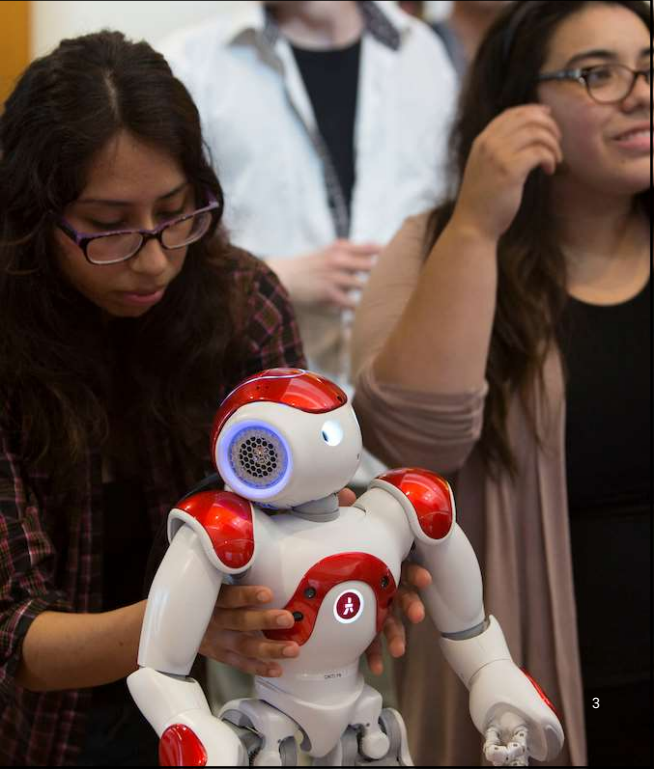
CSU Board of Trustees  
Joint Committee on Educational Policy  
& Finance  
Agenda Item 2  
January 27-29, 2025

## Presentation Objectives

- **GOAL OF WORK**  
Enact a systemwide AI strategy that equips CSU students, faculty, and institutions to lead the state in leveraging emerging AI technologies.
- **GOALS OF THE PRESENTATION**  
Present strategic CSU AI initiatives that will promote equitable access, create key partnerships, and incentivize change.
- **CALLS TO ACTION AND NEXT STEPS**  
Build support for systemwide AI initiatives and partnerships to be initiated within the 2025 calendar year.

# Today's Agenda

- CSU Generative AI Committee
- Current AI Context
- CSU AI Strategy
- Next Steps



# CSU Generative AI Committee

Ed Clark (co-chair) Chief Information Officer Chancellor's Office	Leslie Kennedy Assistant Vice Chancellor, Academic Technology Services Chancellor's Office	Carlos Rodriguez Dean, University Library CSU Los Angeles
Nathan Evans (co-chair) Deputy Vice Chancellor Chancellor's Office	Tasos Lazarides Director of Digital Transformation CSU San Marcos	Sasha Sidorkin Chief AI Officer CSU Sacramento
Catherine Barrad Associate Vice Chancellor & Chief Counsel Chancellor's Office	Emily Magruder Director, Innovative Teaching & Future Faculty Development Chancellor's Office	Beth Steffel Chair, ASCSU; Assoc Professor – Design CSU San Bernardino
Dave Beaver Chief Procurement Officer Chancellor's Office	Kate Miffitt Sr. Director – Innovation, Digital Experience, & Accessibility Chancellor's Office	Yvette Tran Student Representative, CSSA CSU Northridge
Bill Britton Chief Commercial Innovation Officer Cal Poly San Luis Obispo	Ranjit Philip Vice President & Chief Information Officer CSU Northridge	Dominic Quan Transfer Student Representative, CSSA San José State
Josh Callahan Chief Information Security Officer Chancellor's Office	Ganesh Raman Assistant Vice Chancellor for Research Chancellor's Office	Michael Trullinger Chief Technical Operations Officer Chancellor's Office
James Frazee Vice President & Chief Information Officer San Diego State	Simon Rodan ASCSU; Professor – Management San José State	Min Yao Vice President & Chief Information Officer CSU Long Beach
Bryon Jackson Associate Vice President, Technology Services & Innovation CSU Long Beach	Andrew Roderick Assistant Vice President of Academic Technology San Francisco State	

# Current AI Context = Early Internet



Image source: <https://www.linkedin.com/pulse/remiscing-early-days-internet-marketing-advertising-evan-brown>

# Today's AI "Races"

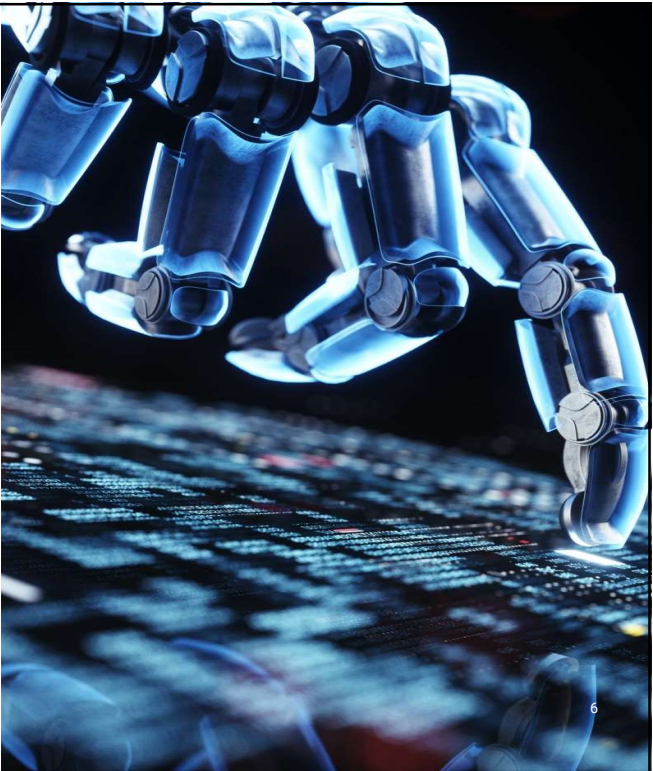
## AI Race #1: Tech Vendor Innovation

- Relentless innovation by tech vendors
- Market flooded with AI-embedded technologies
- New AI tools released every 2.5 days

## AI Race #2: CIOs Delivering AI Outcomes

- Focus on delivering AI outcomes safely & effectively
- **Don't feel pressured by vendor pace**
- **Don't scramble to adopt all latest AI technologies**

Gartner.



# Impacting California and Beyond

### STUDENTS

- Learning
- Experience
- Outcomes

### FACULTY

- Teaching
- Research

### CSU

- Productivity
- Efficiency
- Data Utilization

# AI-Empowered CSU

### STUDENTS

## Elevated Experience, Future-Ready Graduates

Equip students with personalized, future-focused learning tools and seamless campus experiences that improve student success and foster real-world readiness.

### FACULTY

## Next-Gen Teaching, Pioneering Research

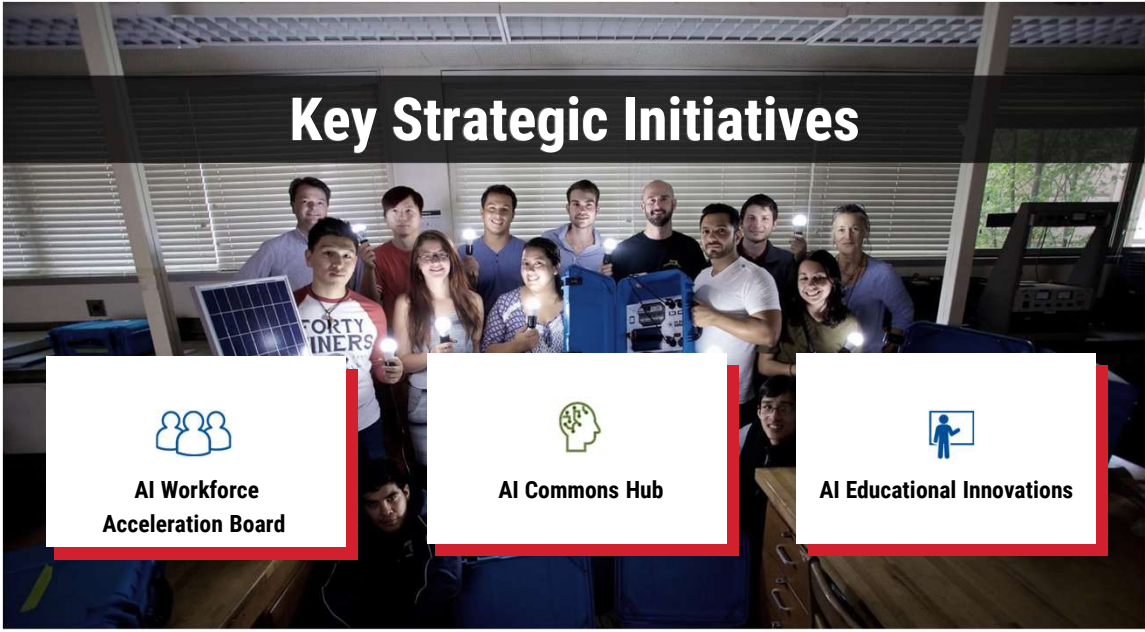
Empower faculty with cutting-edge AI technologies, training, and research capabilities, resulting in transformative pedagogical practices (where appropriate) and groundbreaking scholarly contributions.

### THE CSU

## Insight-Driven Operational Excellence

Leverage AI to empower staff, optimize operations within a complex system, and utilize the scale and depth of our data to drive impactful, informed decision-making.





# AI Workforce Acceleration Board

- Industry leaders, State of CA and CSU stakeholders will partner to identify and advocate for AI skills needed in California's workforce and beyond.
- The board will host a series of AI Challenges for CSU students to address key issues using AI technology.
- Students receive valuable internships and employment.



*PARTNERING AND TRANSFORMING*

# CSU Workforce Acceleration Board Partners



# State of California AI Priorities

- **Secretary Amy Tong**  
Government Operations Agency
  
- **Secretary Stewart Knox**  
California Labor and Workforce  
Development Agency



# State of California AI Priorities

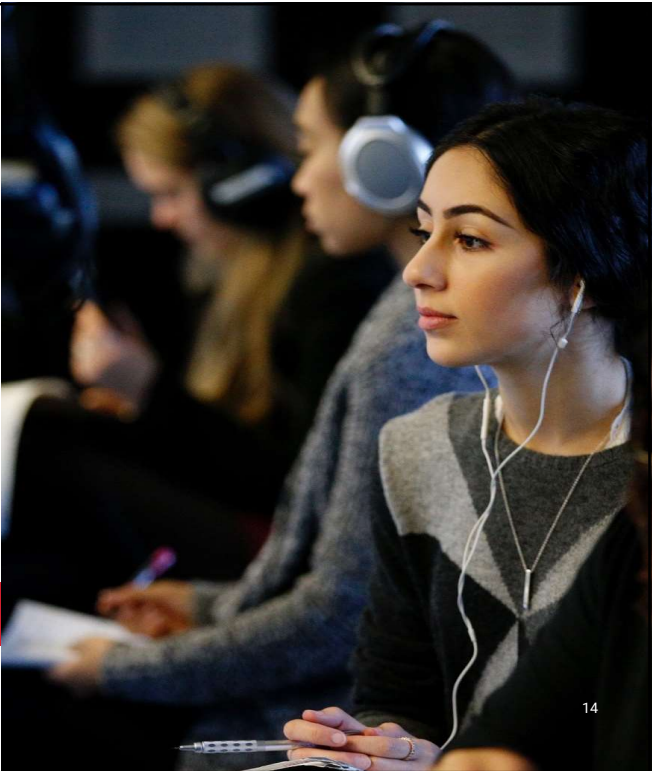
- State’s overall strategy on AI
- Focus on workforce development
- Partnership with academia and industry



# AI Commons Hub

- Systemwide Hub providing equitable access to AI skills training, AI tools and applications, and CSU-developed AI solutions for all students, faculty, and staff.
- Opportunities for partner grants and funding.
- Future opportunities to support campus continuing education efforts in upskilling and reskilling for working professionals and returning alumni.

EQUITABLE ACCESS



# AI Educational Innovations

Faculty development, resources and a recognition program to highlight excellence and innovation in teaching, learning, scholarship and research.



INCENTIVIZING CHANGE

# Investments

STUDENTS	FACULTY	THE CSU
<b>AI Workforce Acceleration</b>	<b>AI Educational Innovations</b>	<b>Equitable Access to AI</b>
Acceleration Board CSU AI Summit CSU AI Challenges	Faculty Incentives CSU-wide Training Resources	AI Commons Hub CSU Development Platform GPT for all CSU Students



Thank you



**CSU** The California State University