



CSU The California State University

Outline

- Recap of July Board Presentation
- Proposal Before the Board
- Actions Since July Board Meeting
- Next Steps
- Moving Forward

2

Recap of July Board Presentation

Cal Maritime Challenges

Declining enrollment (31% drop over 7 years)

Increasing compensation and operating costs

Challenging financial aid and scholarships for very high investment majors at a destination campus

Unsustainable financial condition

3

July Board Presentation: Cal Maritime Strengths

Only degree-granting maritime academy on West Coast

Vital to statewide and national economic and security interests

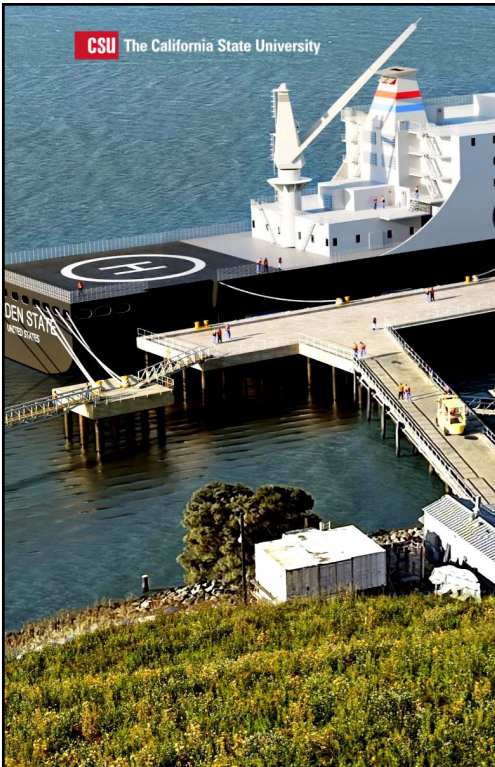
High return on very high investment degree programs

Mechanical engineering, oceanography, offshore wind, international logistics, workforce development efforts

Best in class implementation of high-impact practices

New training ship and pier in 2026

4





July Board Presentation: Cal Poly Strengths

Thriving comprehensive “Learn by Doing” university

Huge demand for enrollment and graduates

Strong reputation in engineering, agriculture, business and architecture

Robust research and innovation agenda with strong industry and community partnerships, offshore wind

Creative and proven model to enhance enrollment & graduation rates of low-income, historically underserved students

2023-24 MSI, AANAPISI & Emerging Hispanic Serving Institution

5



Expanding Affordability and Investing in Student Success

Provide needed financial aid & scholarships for low-income students from California, Pacific-facing states and territories

Recruit and retain low-income students to high- and very-high-investment programs at destination campuses

Enhance support of “Learn by Doing”

Enhance recruitment and retention of faculty and staff

6

Affordability & Access

Effective fall 2026, all Maritime students will be enrolled in Cal Poly

Enhanced Financial Aid and Scholarships:

For all continuing students to cover the difference in fees through graduation

For eligible future California resident students

For eligible future cadets from Washington, Oregon, Hawaii, Alaska, Guam & Samoa pursuing a merchant marine license

7

Outline

Recap of July Board Presentation

▶ Proposal Before the Board

Actions Since July Board Meeting

Next Steps

Moving Forward

8

Proposal Before the Board

Approve integration
recommendation

OR

Initiate planning for an orderly
closure of Cal Maritime

9

Rationale for Integration

Integration saves critical maritime degree programs

One-time investment of \$5 million a year for seven years

Current \$52.3 million base budget is insufficient to keep
Maritime Academy fully operational

Estimate additional \$29.9 million minimum ongoing funding to
maintain the Maritime Academy

Integration avoids significant and unsustainable additional
ongoing costs

10

Outline

Recap of July Board Presentation

Proposal Before the Board

▶ **Actions Since July Board Meeting**

Next Steps

Moving Forward

Actions Since July Board Meeting

Becoming
Implementation Ready



Research Regulatory
Requirements



Development of 23
Pre-Integration Workgroups

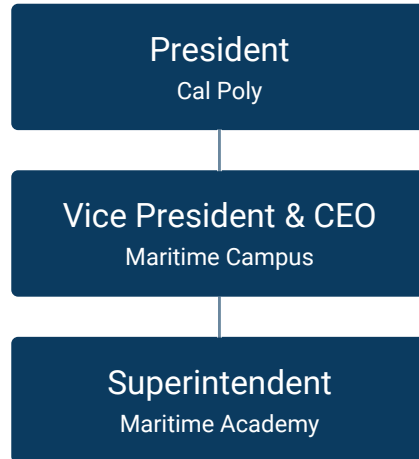


Engage Consultant



Consultation with
Stakeholders

Administrative Structure



Cal Maritime and Cal Poly Pre-Integration Workgroups

PHASE ONE (JUNE 2024)

- Institutional Accreditation
- Post Integration Student Academic Degree Program Offerings
- Continuing Student Academic Program Transitions
- Metrics for Success Post-Integration
- Workforce Transitions
- Integrating Administrative Functions and Systems
- Legal and Regulatory Compliance
- Institutional Financial Aid and Fees
- Student Support Services
- Naming Legal and Accreditation Requirements
- Athletics
- Ongoing External Advocacy Efforts

PHASE TWO (AUGUST 2024)

- Public Safety/Risk Management
- Facilities Integration
- Auxiliaries
- Academic Calendar
- Summer Programs
- Philanthropic Foundations
- Student Affairs
- Associated Students
- Alumni
- Faculty Governance
- Represented Employees Meet and Confer Process Initiated

Continued Cost Saving Measures

- Continued budget reductions at Maritime
- Personnel reductions
- Departure of key personnel
- Shared services with Cal Poly

15

Outline

Recap of July Board Presentation

Proposal Before the Board

Actions Since July Board Meeting

▶ **Next Steps**

Moving Forward

16

Timeline is Critical

- Academic calendar
- Curriculum development
- Accreditation
- Summer Sea Term planning
- New ship & pier project

17

Next Steps and Timeline



SEPTEMBER 2024

Additional information and discussion by Board, followed by additional consultation

OCTOBER 2024

Continued work by pre-integration workgroups

NOVEMBER 2024

Board action

JULY 2025

Administrative integration becomes effective

FALL 2026

Maritime Academy enrollment facilitated through Cal Poly

18

Outline

Recap of July Board Presentation

Proposal Before the Board

Actions Since July Board Meeting

Next Steps

▶ **Moving Forward**

19



Moving Forward

Integration benefits the CSU and California

Avoiding closing Cal Maritime

Meeting critical academic, student, state and national needs

Timely action is critical

We will return to Board in November for approval of the integration

20

