



1

This process reflects a key priority for this academic year

Chancellor García’s Priorities for AY 24-25:

1. Reimagining equity focused student success to and through graduation to a meaningful and purposeful future for every graduate
2. Continuing to rebuild trust, action, accountability, advocacy, and authentically telling the CSU story
3. Managing the CSU’s fiscal challenges through creativity, collaboration and an uncompromising focus on our educational mission
4. Creating and sustaining a culture of continuous improvement throughout the system
5. Engaging in long-term planning to realize our call and our position to be the national model for public higher education and educating America’s new majority

CSU The California State University **SOVA** © COPYRIGHT 2019 SOVA. 2

2

**The strategic plan
will create the
roadmap to reach an
inspired vision for
the system's future**

As the preeminent university system educating America's new majority, the CSU is:

1. THE national leader/advocate for the value of higher education
2. An engine for the future of work
3. A creator of career and economic mobility
4. A supplier of talent for the state's workforce needs
5. A sought-after provider of lifelong learning
6. Outcomes-driven and data-informed
7. A mission-driven employer



© COPYRIGHT 2019 SOVA.

3

3

Steering Committee

The steering committee is comprised of systemwide and university leadership, as well as representatives of all major CSU constituencies, including students, faculty, staff, alumni and the CSU Board of Trustees.

The committee will serve a critical and valued advisory role to Chancellor García, and the Board of Trustees, while collaborating with Chancellor's Office staff and renowned higher education consultant Sova as we develop, for the first time in over a decade, a three-year, systemwide strategic plan.

< 3 >



© COPYRIGHT 2019 SOVA.

4

4

Steering Committee Members

Elizabeth "Betsy" Boyd

Chair, Academic Senate of the California State University

Jack Clarke

Chair, Board of Trustees

Kristin Crellin

Chair, CSU Foundation Board of Governors

Nathan Dietrich

Assistant Vice Chancellor, Advocacy and State Relations

Iese Esera

President, California State Student Association

Danielle García

Associate Vice Chancellor & Chief of Staff to the Chancellor, Executive Office

Saúl Jiménez Sandoval

President, Fresno State University

Julia Lopez

Trustee, Board of Trustees

Lynn Mahoney

President, San Francisco State University

Dilcie Perez

Deputy Vice Chancellor & Chief Student Affairs Officer, Academic and Student Affairs

John Poli

President, CSU Alumni Council

Greg Saks

Vice Chancellor, External Relations and Communications

5

About Sova

Building Capacity for Large-scale Change In Higher Education

Accelerating the pace and improving the quality of complex problem solving in higher education and workforce development;

Helping higher education leaders move from strategy to action, from solution to implementation, and from pilot to scaled intervention;

Specifically, helping higher education leaders with business planning, change leadership, process improvement, and project management.

6

About Sova

Our Approach

Supporting high-quality innovation that is evidence-based, sustainable, and scalable;

Attention to both the technical and human dimensions of change;

Rigorous focus on process design;

Clear-eyed attention to resource allocation and business modeling;

Planning for meaningful engagement of critical stakeholders;

Improving collaboration between groups to build a base of support for change and to drive progress on key initiatives.

7

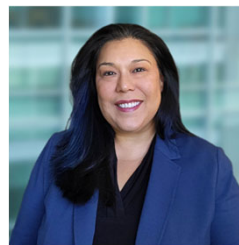
Sova's Core Project Team



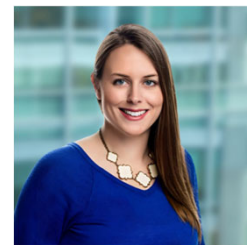
Alison Kadlec
Senior Partner



Paul Markham
Managing Partner

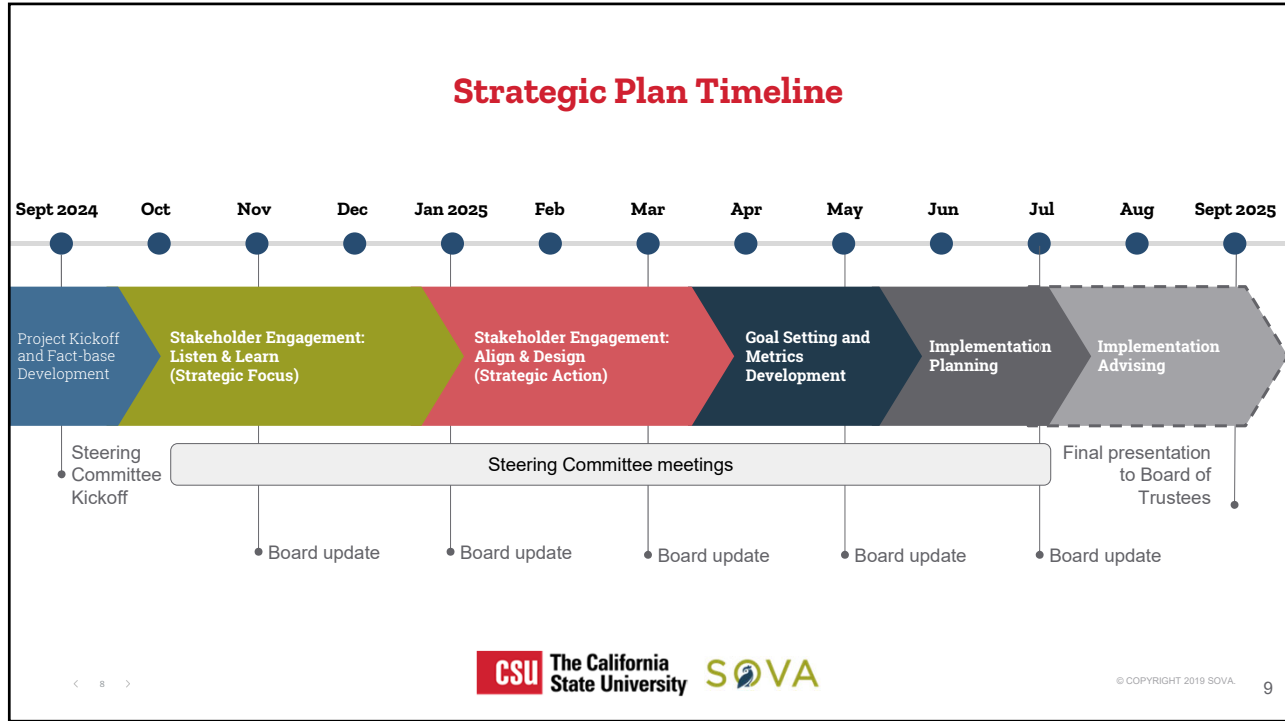


Marty Alvarado
Partner

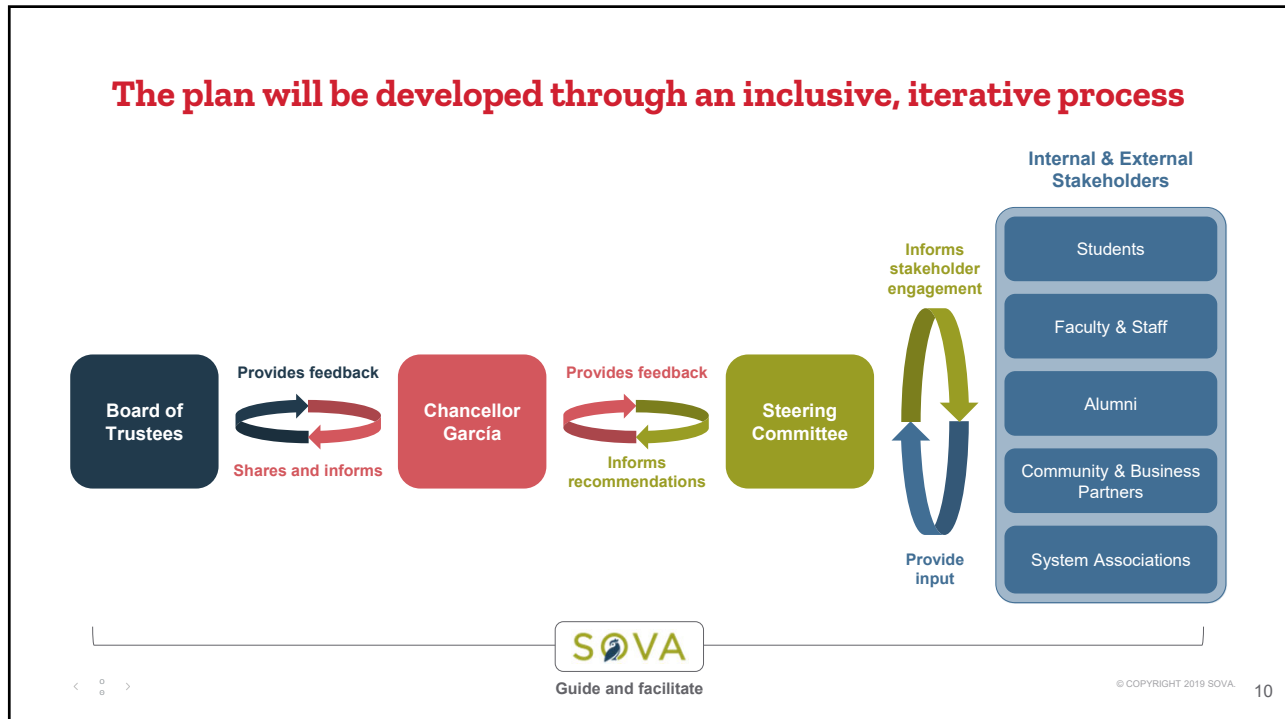


Lauren Dibble
Project Director

8



9



10

