

Westlands at a Glance



Westlands



- Largest agricultural water district in the United States (in terms of irrigable acreage)
- Comprised of hundreds of family-owned farms
 - Often operated by multi-generational farmers
- More than 50,000 people live and work in the communities dependent on Westlands' agricultural economy

A Few of the Crops We Grow 2023 (2022)



Westlands

Almonds

78,050 (94,826) acres



Tomatoes

53,685 (41,926) acres



Pistachios

73,862 (79,199) acres



Wheat

21,205 (13,796) acres



Grapes

14,219 (15,887) acres



Garlic

11,998 (11,969) acres



Where Our Water Starts



Westlands

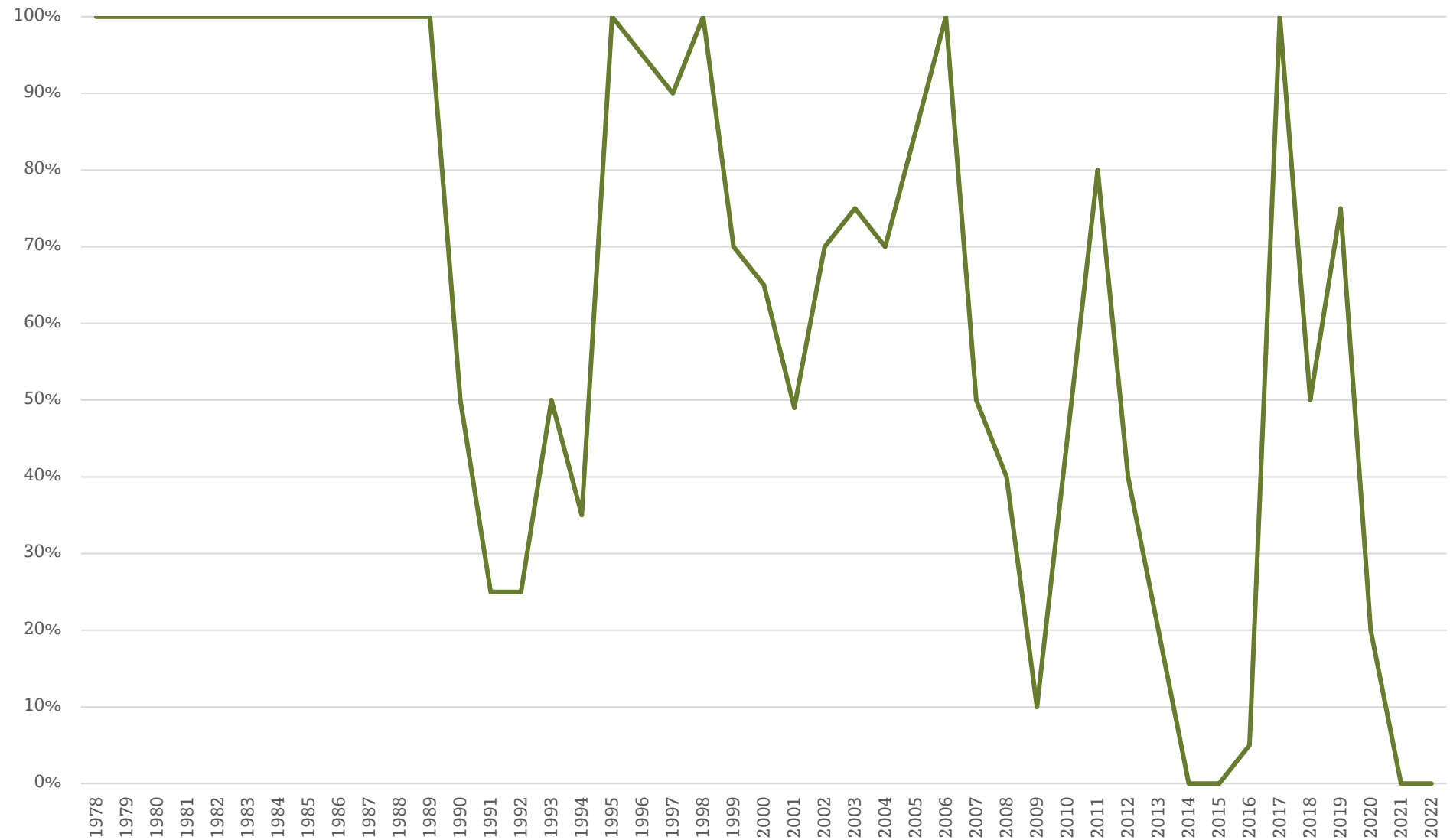


- Central Valley Project (CVP)
- Multi-purpose project
 - Navigation
 - Supplies water for farms
 - Supplies domestic and industrial water
 - Generates electric power
 - Conserves fish and wildlife
 - Creates opportunities for recreation
 - Enhances water quality.
- CVP serves the Bay Area, Sacramento Valley and San Joaquin Valley

Westlands' Percentage of Contracted Water from the Central Valley Project



CVP Water Allocation

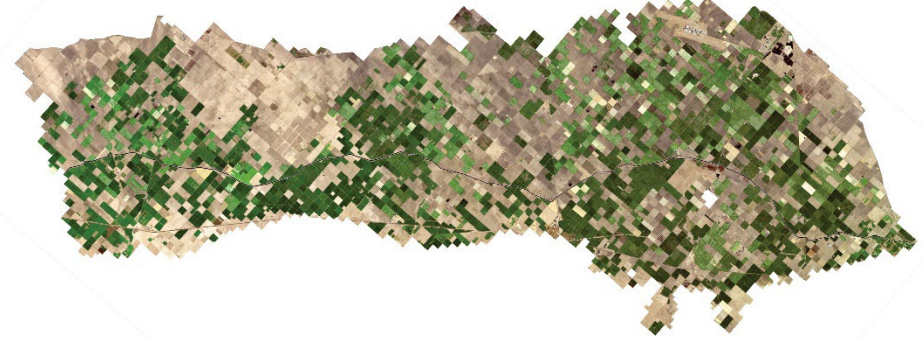


Low Water Allocation Impact

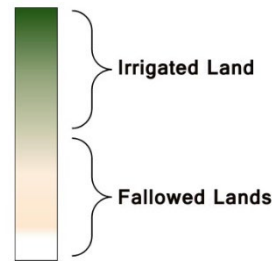
2023



2022



	2023
Allocation	100%
Irrigable Acres	563,556
Farmed Acres	364,856
Fallowed Acres	198,700



	2022
Allocation	0%
Irrigable Acres	563,556
Farmed Acres	339,820
Fallowed Acres	223,736

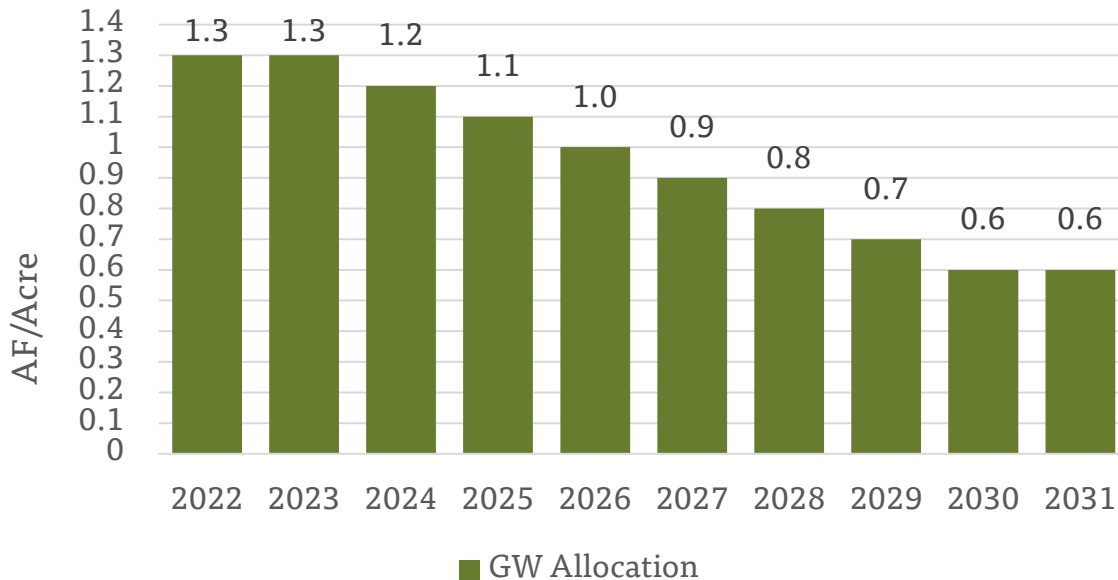
Groundwater Allocation and Transition Period



Westlands

- Sustainable yield of 305,000 AF/year
- ~525,000 acres eligible receive allocation
- Starting 2022, 8-year “Transition Period”
- **1.3 AF/acre taper to 0.6 AF/acre allocation**

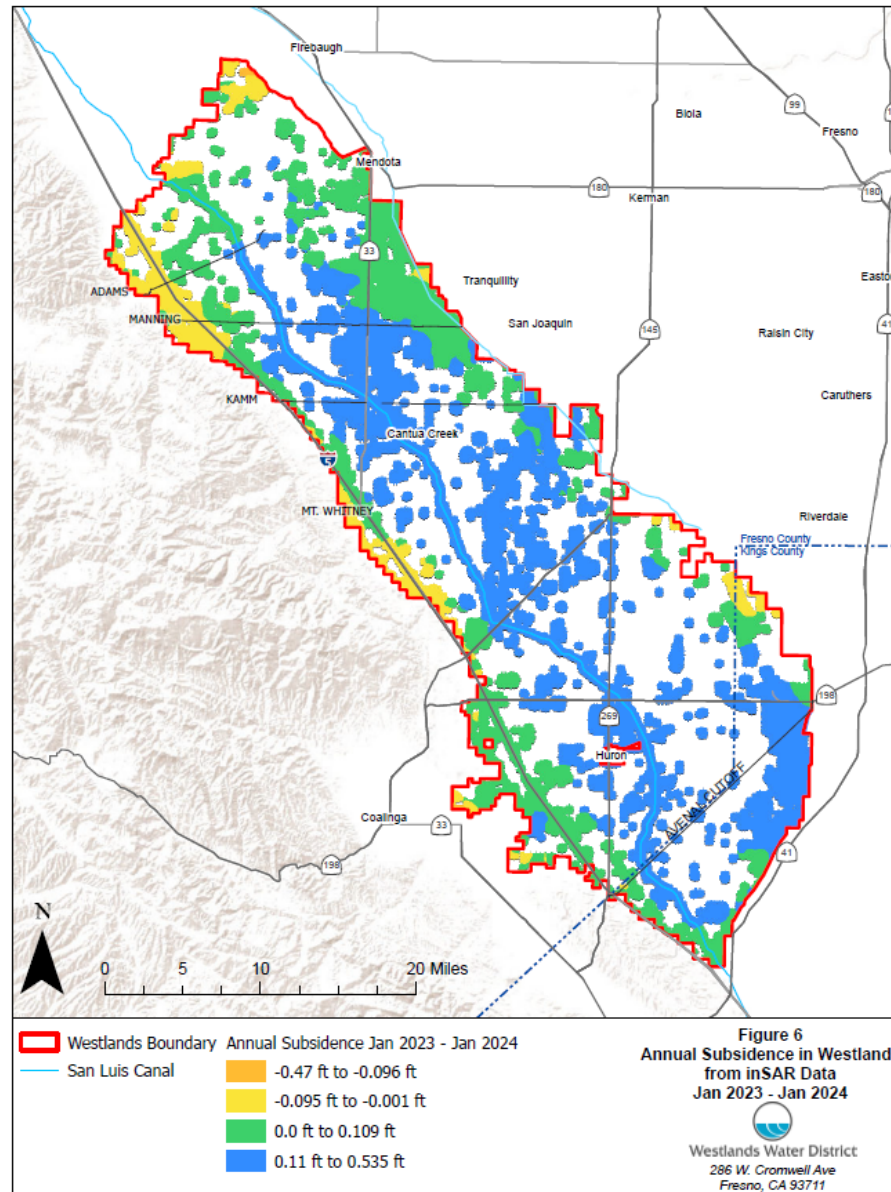
Water Year	Allocation Cap
2022	1.3 AF per acre
2023	1.3 AF per acre
2024	1.2 AF per acre
2025	1.1 AF per acre
2026	1.0 AF per acre
2027	0.9 AF per acre
2028	0.8 AF per acre
2029	0.7 AF per acre
2030	0.6 AF per acre



Reversing Subsidence in 2023



Westlands



2023 Groundwater Recharge Overachievement



Westlands

- 380,000 AF Recharged
 - 112,000 AF by Westlands
 - 268,000 AF by Private Growers
- Net 300,000 AF of groundwater credits created (72,000 AF for WWD)
- \$11.4 million invested by Westlands (not including Private Growers)
- One Year of Sustainable Yield gained

