



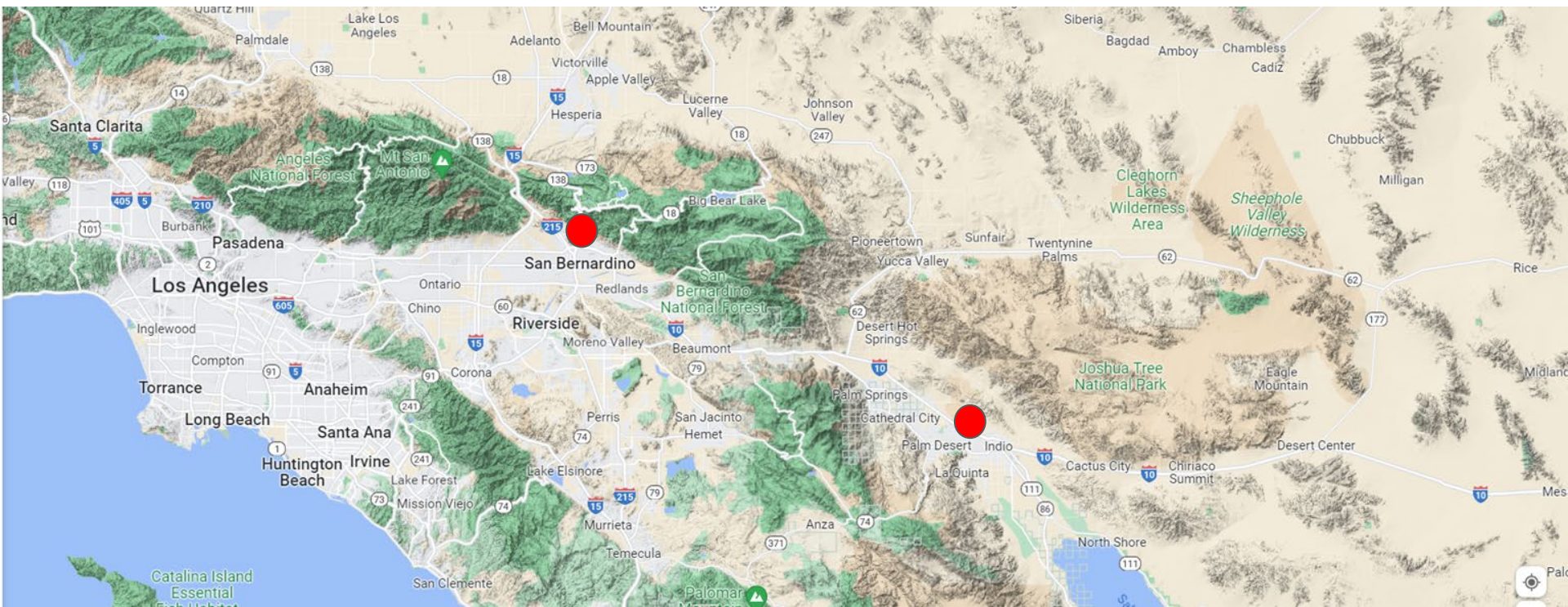
Institute for  
Watershed  
Resiliency



  
CALIFORNIA STATE UNIVERSITY  
SAN BERNARDINO

Dr. Jennifer Alford, Director  
Associate Professor, Geography & Environmental Studies  
Associate Director of Research, CSU WATER  
[jennifer.alford@csusb.edu](mailto:jennifer.alford@csusb.edu)

# CSU San Bernardino Campus Locations



**Community-Agency-University Partnerships**

*Support Best Practices & Innovations through Workforce Development & Student Learning*

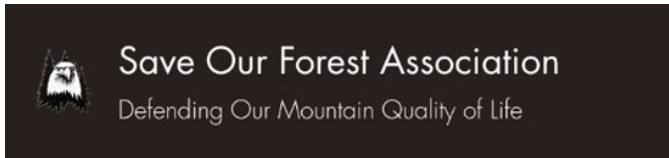
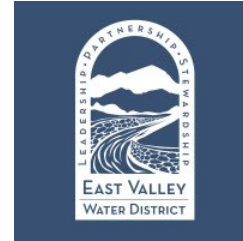




# Community-University Partnerships + Workforce Development Across the IE



National  
Forest  
Foundation



Geography  
Environmental Studies  
Geology  
Sociology  
Anthropology  
History  
Public Health  
Public Administration  
Cyber Security  
Liberal Studies  
College of Education STEM

Feedback Loops to  
Support Workforce  
Development &  
Water Justice/Resiliency



Provide experiential learning opportunities in partnership with industry practitioners that engage student participants in water focused field research experiences across diverse socio-economic & environmental landscapes.



**CSUN**

CALIFORNIA  
STATE UNIVERSITY  
NORTHBRIDGE



CALIFORNIA STATE UNIVERSITY  
SAN BERNARDINO



**CAL POLY**



CENTER FOR GEOSPATIAL  
SCIENCE & TECHNOLOGY



**Institute for  
Watershed  
Resiliency**



# WATERTALKS

The California Department of Water Resources (DWR) allocated \$98 million to the Los Angeles-Ventura (LA-V) Funding Area as part of the \$510 million in funding authorized through the Proposition 1 IRWM grant.

- Community Surveys
- Tribal Listening Sessions
- Needs Assessments
- Project Development & Implementation



<https://watertalksca.org/>

We welcome partnerships

Jennifer Alford, PhD  
jennifer.alford@csusb.edu



**Institute** for  
**Watershed**  
**Resiliency**

